

**The University of Texas at Tyler
School of Nursing**

NURS 6339: Mixed Methods Research Designs

Dr. Beth Mastel-Smith

Spring 2022

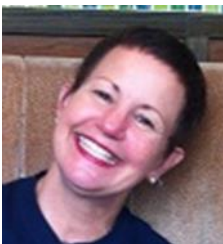
Welcome to Mixed Methods Research (MMR) Design! The purpose of this course is to refine and expand your research skills through exploration of the emerging field of mixed methods research. You will build upon the concepts covered in your qualitative and quantitative research courses. Important components of this course include refinement of skills in critiquing research and increased knowledge related to study design and methods. The outcome of this semester will be a mini-research proposal that addresses gaps in knowledge related to your topic of interest. I am delighted to accompany you on this exciting semester of discovery, challenging thinking, and creative progress toward reaching your goal of a PhD in Nursing!

Content has been arranged by topic over two or three weeks. There are a variety of assignments which aim to help you develop the final product, a MMR proposal. For one assignment, MMR Introduction, you will create your assignment, review, and provide feedback to a buddy. Your grade for this assignment is based on the critique performed. For one assignment, MMR *Methods* Critique, you will work with your buddy to critique the methods section of a MMR study. In addition, there is one discussion and a MMR Critique. The semester will culminate with a live zoom presentation in which you will share your research proposal with your peers. It sounds like a lot but as one wise student in dissertation said to me the other day, "I'm eating the elephant one bite at a time" and that is just what we are going to do too!

Please refer to the information contained in this Syllabus anytime you have a question regarding the basic course information.

It's great to have you as part of this journey!

Your Faculty



Beth Mastel-Smith, PhD, RN
The University of Texas at Tyler
College of Nursing and Health Sciences
School of Nursing
3900 University Blvd. Tyler, TX 75799
Office Hours: On-line and by appointment
Course email: bmastelsmith@uttyler.edu
Phone: 713-416-5690

Technical Information

If you experience technical problems, contact the 24/7 Canvas Support by phone or chat by clicking the Help button in Canvas which is located at the bottom of the Canvas Global Menu on the left side of the window.

When you contact Canvas Support, be sure to include a complete description of your problem or question including:

- The title and number of the course
- The page in question
- If you get an error message, a description and message number
- What you were doing at the time you got the error message

You can also search the Canvas Student Guide for useful information on using Canvas at <https://community.canvaslms.com/docs/DOC-10701> If you are experiencing login/password problems or need support for other technical issues, contact Campus Computing Services located in the Business Building (BUS 101), by phone 903-565-5555, or by email at itsupport@uttyler.edu

Course Title: NURS 6339 Mixed Methods Research Design

Course Description

This course provides an introduction to the emerging field of mixed methods research including research designs, strategies for sampling, data collection, analysis, and integration.

Prerequisites

Successful completion of NURS 6322: Advanced Statistics, NURS 6330: Quantitative Research Design, and NURS 6333: Qualitative Research Design (or comparable courses) are prerequisites.

Student Learning Outcomes

Upon successful completion of the course, the student will be able to:

1. Critically analyze published mixed methods research and research proposals / grant applications for research rigor.
2. Develop a mixed methods research proposal to study a substantive health problem.
3. Discuss the important issues and future directions of mixed methods research and its application across disciplines.

Course Outline

Content is divided by Module:

- Introduction to MMR: Historical & Philosophical Foundations
- Evaluation of Published MMR
- MMR Introducing a MM Study
- MMR Methods Critique
- MMR Dissemination (Abstract and Presentation)

Course Calendar/Schedule

The course calendar and schedule may be viewed by accessing the documents located in the Module tab. **NOTE:** March 21 is the last day to withdraw from one or more courses.

Weekly office hours will be arranged according to the most convenient time for most students.

Textbook Information, Other Readings and Materials

The **required** textbook for this course is:

Creswell, J.W., & Plano Clark, V. (2017). *Designing and conducting mixed methods research*. 3rd edition. ISBN 9781544328805. Thousand Oaks, CA: Sage Publications, Inc.

Recommended (not required) texts and resources:

American Psychological Association. (2009). *Publication manual of the American Psychological Association*. (6th ed.). Washington, D.C.: Author. ISBN: 1-4338-0561-8.

Booklists and bookstore links may be accessed from the [UT Tyler](#) homepage. You may purchase your textbook from any source you wish or you can purchase it through the UT Tyler Bookstore.

Grading Information

Assignment	
Worldview Discussion	10%
Mixed Methods Research Critique	15%
Introducing a MM Study	15%
Methods Critique	20%
Research Proposal Abstract	15%
Research Proposal Presentation	25%

1. **DISCUSSION BOARD POSTINGS AND RESPONSES:** *You have been assigned to a Mixed Methods Group for the purpose of Discussion Board assignments. Graded Discussion Board postings are intended to solidify your stance on the various research approaches and approaches and the challenges that may be posed in a mixed methods design. Please refer to the "Discussion Board Grading Rubric" for a thorough discussion of how to successfully complete these assignments.*
2. **CRITIQUE OF PUBLISHED RESEARCH:** *This graded critique will help in understanding mixed methods research and prepare you for your future role as a reviewer for professional conferences and journals.*
3. **DEVELOPMENT AND CRITIQUE OF MIXED METHODS INTRODUCTION:** *This assignment is to help foster your skill in developing a MM (a) title, (b) introduction & problem statement, (c) design & purpose statement, and (d) research questions.*
4. **CRITIQUE OF MMR METHODS:** *For this assignment you will work with your critique buddy to evaluate methods used in a MMR study.*
5. **RESEARCH PROPOSAL ABSTRACT AND PRESENTATION:** *This graded abstract AND presentation may serve as a draft of your dissertation research proposal or pilot study and is intended to demonstrate your ability to synthesize the components of a mixed methods research study. It also serves to hone your skill in presenting at professional conferences.*

Specific guidelines and grading rubrics are located in the respective modules. Links to upload assignments are located in the assignment page. Final grades for the course will be determined based upon the following point assignments:

A - 90-100

B - 80-89

C - 70-79

D - 60-69

F - Below 60

NOTE: There is no rounding from a “C” to a “B”, for example a 79.9 will not be rounded to an 80.

Reading Assignments

- Assigned readings in doctoral education are the beginning, not the endpoint. These readings will point you in the direction of continued reading and pondering of your scholarly thoughts. Each participant is responsible for completing the reading assignments in a timely manner. Deadlines are listed in the Course Schedule.
- Discussion and written assignments are made with the assumption that required reading assignments are completed prior to completion of discussion and written assignments.

Written Assignments

- All written assignments are to be completed in Microsoft Word and submitted in a timely manner. Deadlines are listed in the Course Schedule.
- Please note that all written assignments must be submitted by midnight *Central Time* on the due date.
- All assignments should be submitted through the assignment links. If your web connection is down for some reason, please contact me by phone to make arrangements to get the assignment submitted within the posted time constraints
- Plagiarism is a serious academic offense. Please avoid the consequences of academic dishonesty by citing all sources that you use in your work. Academic dishonesty, such as unauthorized collusion, plagiarism and cheating, as outlined in the [Handbook of Operating Procedures](#), University of Texas at Tyler, will not be tolerated. University regulations require the instructor to report all suspected cases of academic dishonesty to the Dean of Students for disciplinary action. In the event disciplinary measures are imposed on the student, it becomes part of the students' official school records. Also, please note that the handbook obligates you to report all observed cases of academic dishonesty to the instructor.
- Late assignments will receive point reductions.

Unicheck

Unicheck is a feature provided by Canvas that is designed to detect plagiarism or non-original student work. This feature is set up so that when you submit papers, they are automatically sent through Turnitin. The program checks your work against a comprehensive database of source material including previous students' work and other papers and materials found on the web. An originality report will be generated that indicates the percentage of non-original material (text that matches existing sources) found in your paper. The purpose of using

Unicheck in your course is to ensure you are writing original papers and to encourage you and all students to properly attribute all sources used.

Assignment Turn-In Process

All assignments and projects will be submitted through the assignments link of Canvas. Use the following process to prepare and submit assignments:

- prepare your assignment using Microsoft Word. Name your assignment with the following convention: last name first initial, assignment title (ex. Last F_Assignmenttitle)
- upload your saved assignment document via the assignment link

I will grade assignments within Canvas, provide feedback according to the grading rubric and will make an announcement when grading is complete. To see comments about your assignment, click on the Grades tab, click on the assignment and View Feedback. If you use an alternative to written assignments, the work will be graded using the Criteria sheet which will be returned through the Grades tab.

Email

To communicate by email within the course with other participants or all participants, click the Inbox on the left side of the Canvas frame. Click on the leaf in the upper left corner to send a message. You are able to send messages to All Users or Select Users in the course, including the instructor. If you need more instructions on how to send email messages with Canvas please read the student manual located in the Help area of the course.

The course email is bmastelsmith@uttyler.edu. Questions or problems other than technical problems (see Technical Requirements in this Syllabus) may be submitted to the email address above.

I will make every effort to respond quickly to your emails. Generally speaking, I check email twice a day during the workweek. Do not expect responses on the weekend. Occasionally, I will be traveling, and it might take up to 48 hours to respond. If I am unavailable for an extended period, I will post an announcement so that you can plan accordingly. One caveat: technical problems in email systems may slow down responses! I am committed to communicate with you in a timely manner, so if there are any problems, I will work to solve them.

Digital Library Resources

Students enrolled in this course have online access to the UT Tyler [Robert R. Muntz Library](#). Follow this link, and then complete the instructions at those sites for accessing information from a distant site. Many of the database subscriptions funded by student fees give you access

to full text journals that you will need for your review of the literature in each course. If a particular journal is not available, the library staff will procure the article for you using the Iliad feature. Please take the time to update your account and get familiar with the resources available. They are awesome.

University Policies / Student Resources:

Please see https://www.uttyler.edu/nursing/college/student_guide_and_policies.php for all current School of Nursing policies.

Course Evaluation

UT Tyler may ask you to complete a voluntary evaluation to help make improvements and adjustments in their overall online learning forums. The university evaluation will include questions specific for this course and will be made available for you to complete in the last week of instruction. Your comments and recommendations will be considered seriously as the course is updated. Your input throughout the semester contributes to my commitment to improve continually the quality and relevance of this course.

Roles and Responsibilities

Students will read assigned materials, engage in online dialogue, and ponder the implications of the choices made by researchers as studies are designed. Products of this course will be evidence of proficiency demonstrations (critiques, assignments, poster, and presentation) and documentation of dialogue. To know and understand the policies that affect your rights and responsibilities as a student at UT Tyler, please follow this link:

<http://www.uttyler.edu/wellness/rightsresponsibilities.php>

Navigation

In order to effectively participate in online learning, it is imperative that you understand how your course is arranged and how to access and contribute information. If you have a question regarding the navigation within this course, please refer to the Canvas user manual available under the Help area.

Completion Time

You should expect to spend as much time on an online course as you do in a face-to-face course. As a rough guide, you should plan to spend six to ten hours per week on this course. The actual amount of time will vary from individual to individual. This estimate includes the time you spend in reading, discussions, and assignments.

You will have access to most of the course materials from the start of the course to the end. You may look and study ahead, or go back and review, at any time during the course. All assignments have set due dates. Due dates are as of 11:59pm **Central Time** on that date.

Campus Carry

We respect the right and privacy of students 21 and over who are duly licensed to carry concealed weapons in this class. License holders are expected to behave responsibly and keep a handgun secure and concealed. More information is available at <http://www.uttyler.edu/about/campus-carry/index.php>

UT Tyler a Tobacco-Free University

All forms of tobacco will not be permitted on the UT Tyler main campus, branch campuses, and any property owned by UT Tyler. This applies to all members of the University community, including students, faculty, staff, University affiliates, contractors, and visitors. Forms of tobacco not permitted include cigarettes, cigars, pipes, water pipes (hookah), bidis, kreteks, electronic cigarettes, smokeless tobacco, snuff, chewing tobacco, and all other tobacco products. There are several cessation programs available to students looking to quit smoking, including counseling, quitlines, and group support. For more information on cessation programs please visit www.uttyler.edu/tobacco-free.

Recording of Class Sessions

Class sessions may be recorded by the instructor for use by students enrolled in this course. Recordings that contain personally identifiable information or other information subject to FERPA shall not be shared with individuals not enrolled in this course unless appropriate consent is obtained from all relevant students. Class recordings are reserved only for the use of students enrolled in the course and only for educational purposes. Course recordings should not be shared outside of the course in any form without express permission.

Grade Replacement/Forgiveness and Census Date Policies

Students repeating a course for grade forgiveness (grade replacement) must file a Grade Replacement Contract with the Enrollment Services Center (ADM 230) on or before the Census Date of the semester in which the course will be repeated. (The Census Date is January 15.) Grade Replacement Contracts are available in the Enrollment Services Center or at <http://www.uttyler.edu/registrar>. Each semester's Census Date can be found on the Contract itself, on the Academic Calendar, or in the information pamphlets published each semester by the Office of the Registrar. Failure to file a Grade Replacement Contract will

result in both the original and repeated grade being used to calculate your overall grade point average. Undergraduates are eligible to exercise grade replacement for only three course repeats during their career at UT Tyler; graduates are eligible for two grade replacements. Full policy details are printed on each Grade Replacement Contract. The Census Date (Sept. 12th) is the deadline for many forms and enrollment actions of which students need to be aware. These include: Submitting Grade Replacement Contracts, Transient Forms, requests to withhold directory information, approvals for taking courses as Audit, Pass/Fail or Credit/No Credit. Receiving 100% refunds for partial withdrawals. (There is no refund for these after the Census Date.) Schedule adjustments (section changes, adding a new class, dropping without a "W" grade) Being reinstated or re-enrolled in classes after being dropped for non-payment Completing the process for tuition exemptions or waivers through Financial Aid

State-Mandated Course Drop Policy

Texas law prohibits a student who began college for the first time in Fall 2007 or thereafter from dropping more than six courses during their entire undergraduate career. This includes courses dropped at another 2-year or 4-year Texas public college or university. For purposes of this rule, a dropped course is any course that is dropped after the census date (See Academic Calendar for the specific date). Exceptions to the 6-drop rule may be found in the catalog. Petitions for exemptions must be submitted to the Enrollment Services Center and must be accompanied by documentation of the extenuating circumstance. Please contact the Enrollment Services Center if you have any questions.

Disability/Accessibility Services

In accordance with Section 504 of the Rehabilitation Act, Americans with Disabilities Act (ADA) and the ADA Amendments Act (ADAAA) the University of Tyler at Texas offers accommodations to students with learning, physical and/or psychological disabilities. If you have a disability, including non-visible a diagnosis such as a learning disorder, chronic illness, TBI, PTSD, ADHD, or you have a history of modifications or accommodations in a previous educational environment, you are encouraged to visit <https://hood.accessiblelearning.com/UTTyler> and fill out the New Student application. The Student Accessibility and Resources (SAR) office will contact you when your application has been submitted and an appointment with MK Kahrhoff (mkahroff@uttyler.edu), Assistant Director Student Services/ADA Coordinator. For more information, including filling out an application for services, please visit the SAR webpage at <https://www.uttyler.edu/disabilityservices>, the SAR office located in the University Center, # 3150 or call 903.566.7079.

Religious Observance

Students who anticipate being absent from class due to a religious observance are requested to inform the instructor of such absences by the second class meeting of the semester.

Student Absence for University-Sponsored Events and Activities

If you intend to be absent for a university-sponsored event or activity, you (or the event sponsor) must notify the instructor at least two weeks prior to the date of the planned absence. At that time the instructor will set a date and time when make-up assignments will be completed.

Social Security and FERPA Statement

It is the policy of The University of Texas at Tyler to protect the confidential nature of social security numbers. The University has changed its computer programming so that all students have an identification number. The electronic transmission of grades (e.g., via e-mail) risks violation of the Family Educational Rights and Privacy Act; grades will not be transmitted electronically. Emergency Exits and Evacuation Everyone is required to exit the building when a fire alarm goes off. Follow your instructor's directions regarding the appropriate exit. If you require assistance during an evacuation, inform your instructor in the first week of class. Do not re-enter the building unless given permission by University Police, Fire department, or Fire Prevention Services.

Student Standards of Academic Conduct

Disciplinary proceedings may be initiated against any student who engages in scholastic dishonesty, including, but not limited to, cheating, plagiarism, collusion, the submission for credit of any work or materials that are attributable in whole or in part to another person, taking an examination for another person, any act designed to give unfair advantage to a student or the attempt to commit such acts.

- i. "Cheating" includes, but is not limited to:
 - a. copying from another student's test paper;
 - b. using, during a test, materials not authorized by the person giving the test;
 - c. failure to comply with instructions given by the person administering the test;
 - d. possession during a test of materials which are not authorized by the person giving the test, such as class notes or specifically designed "crib notes". The presence of textbooks constitutes a violation if they have been specifically prohibited by the person administering the test;

- e. using, buying, stealing, transporting, or soliciting in whole or part the contents of an unadministered test, test key, homework solution, or computer program;
 - f. collaborating with or seeking aid from another student during a test or other assignment without authority;
 - g. discussing the contents of an examination with another student who will take the examination;
 - h. divulging the contents of an examination, for the purpose of preserving questions for use by another, when the instructors has designated that the examination is not to be removed from the examination room or not to be returned or to be kept by the student;
 - i. substituting for another person, or permitting another person to substitute for oneself to take a course, a test, or any course-related assignment;
 - j. paying or offering money or other valuable thing to, or coercing another person to obtain an unadministered test, test key, homework solution, or computer program or information about an unadministered test, test key, home solution or computer program;
 - k. falsifying research data, laboratory reports, and/or other academic work offered for credit;
 - l. taking, keeping, misplacing, or damaging the property of The University of Texas at Tyler, or of another, if the student knows or reasonably should know that an unfair academic advantage would be gained by such conduct; and
 - m. misrepresenting facts, including providing false grades or resumes, for the purpose of obtaining an academic or financial benefit or injuring another student academically or financially.
- ii. "Plagiarism" includes, but is not limited to, the appropriation, buying, receiving as a gift, or obtaining by any means another's work and the submission of it as one's own academic work offered for credit.
 - iii. "Collusion" includes, but is not limited to, the unauthorized collaboration with another person in preparing academic assignments offered for credit or collaboration with another person to commit a violation of any section of the rules on scholastic dishonesty.
 - iv. All written work that is submitted will be subject to review by plagiarism software.

UT Tyler Resources for Students

UT Tyler Writing Center (903.565.5995), writingcenter@uttyler.edu

UT Tyler Tutoring Center (903.565.5964), tutoring@uttyler.edu

UT Tyler Counseling Center (903.566.7254)

Getting Started

Please refer to the information contained in this Syllabus anytime you have a question regarding the basic course information. Please begin this course by clicking on the Modules button in the left-hand navigation bar. Content is presented according to semester weeks.

Epilogue from Beth

Every discipline recognizes the PhD prepared individual as an expert in research, discovery, and creativity. Perhaps you don't feel like experts quite yet, but this semester will take you one step closer to that recognition. In fact, you may be more familiar with recent developments in the research arena than those who have been immersed in a particular research methodology for decades! We are going to have such fun developing mixed methods research studies that you might not realize you are continuing to build expertise in your field. Welcome to the next step in your program of research! It is going to be a wonderful and productive semester, *Beth*