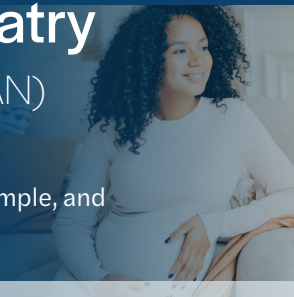




# Child Psychiatry Access Network & Perinatal Psychiatry Access Network (CPAN & PeriPAN)

Mental health is complex. Texas CPAN and PeriPAN are free, simple, and trusted resources for Texas health care clinicians.



## Enroll

In less than 5 minutes:  
**888-901-2726**



## Support

Rapid **peer-to-peer consults, vetted resources, and one-time direct patient consults.**



## Statewide

**Available statewide** to pediatric and perinatal clinicians

## No call is too small. Psychiatry experts are here to support you.

We connect frontline health clinicians to psychiatrists and specialists. Our child and reproductive psychiatrists and mental health experts help you expand your capacity to meet the standard of mental health care for your patients through real-time, no-cost, evidence-based support, including one-time patient-psychiatrist direct consults when indicated. Call for a rapid peer consultation and get the support you need.

### Why CPAN and PeriPAN?

- » Texas children, youth, and perinatal patients are experiencing unprecedented mental health challenges and are facing a shortage of psychiatrists and other mental health clinicians.
- » Health clinicians report feeling more confident treating their patients' mental health needs after consulting with us.
- » Access programs, like CPAN and PeriPAN, improve mental health outcomes.

#### Why CPAN?

- » **One in five children** has a diagnosable mental, behavioral, or developmental disorder — and many more children and youth have persistent mental health symptoms.

#### Why PeriPAN?

- » **One in five perinatal women** has a mental health condition, and mental health needs are the leading underlying cause of pregnancy-related death in the U.S. and Texas.

### How does it work?

- » It's simple to enroll and easy to use. **Call 888-901-2726 Monday-Friday, 8a.m.-5 p.m.** and speak directly to a mental health expert within 5 minutes and a psychiatrist within 30 minutes for a real-time consultation.
- » Leave a message anytime to schedule a convenient call-back time.
- » Enrolled providers can text us using your CPAN/PeriPAN team's unique texting number.

### How do CPAN and PeriPAN help?

- » We provide the real-time support and mental health expertise you need to treat your patient.
- » Our team will vet and compile lists of local referrals and resources for you in 1 business day individualized to your patient.
- » When needed, our psychiatrists provide one-time direct patient consults at no cost to you or the patient/family.
- » We offer free CMEs, ethics credits, and collaborative learning opportunities.
- » Your time consulting with CPAN or PeriPAN may be billable via time or complexity-based coding and if outside the global window.



“

CPAN is an incredible partner. As a pediatrician, knowing that I have a strong referral base and quick access to peer consultation is invaluable.

—— Angela Moemeka, MD, MBA, Pediatrician

”

“

It was just a joy to be able to call my local PeriPAN hub and get a call back from a psychiatrist within 15 minutes. I collaborated with that psychiatrist for the betterment of my patient. It was just easy to use and so accessible.

—— Martin Hechanova, MD, OB/GYN

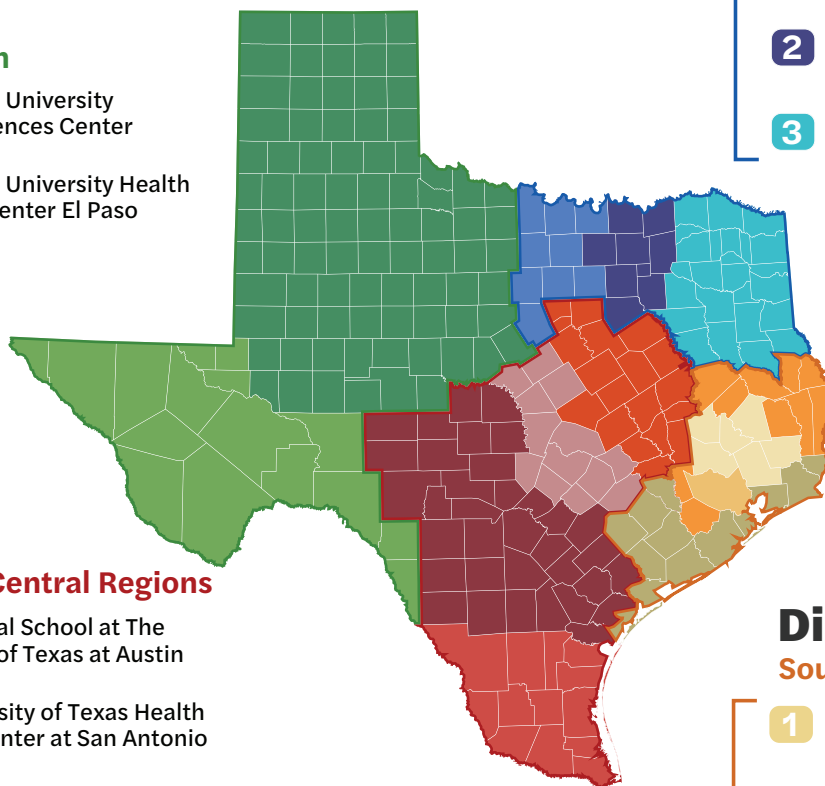
”

## Find Your Regional Program Hub

### Dial 4

#### West Region

- 1 Texas Tech University Health Sciences Center
- 2 Texas Tech University Health Sciences Center El Paso



### Dial 1

#### North and Northeast Regions

- 1 The University of North Texas Health Science Center at Fort Worth
- 2 The University of Texas Southwestern Medical Center
- 3 The University of Texas at Tyler Health Science Center

### Dial 3

#### Valley and Central Regions

- 1 Dell Medical School at The University of Texas at Austin
- 2 The University of Texas Health Science Center at San Antonio
- 3 The University of Texas Rio Grande Valley School of Medicine
- 4 Texas A&M University System Health Science Center

### Dial 2

#### South and Southeast Regions

- 1 Baylor College of Medicine
- 2 The University of Texas Health Science Center at Houston
- 3 The University of Texas Medical Branch at Galveston

For more information, call **888-901-2726 dial 1, then 3**, email **CPANinfo@uttyler.edu**, or go to **TXPeriPAN.org** and **TXCPAN.org**