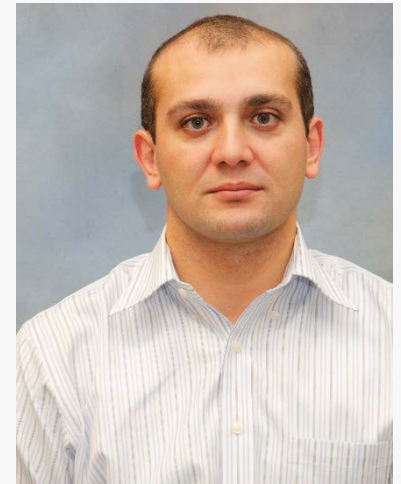


# Gökhan Saygili, Ph.D., P.E.

## Assistant Professor Civil Engineering

### The University of Texas at Tyler



## Education

- Ph.D. Civil and Environmental Engineering, UT Austin, 2008
- M.S. Civil Engineering, Concordia University, Canada, 2005
- B.S. Civil Engineering, Istanbul Technical University, Turkey, 2002
- P.E. Texas, 2010

## Areas of research interests

### *Non-traditional stabilization of base course and subgrade soils*

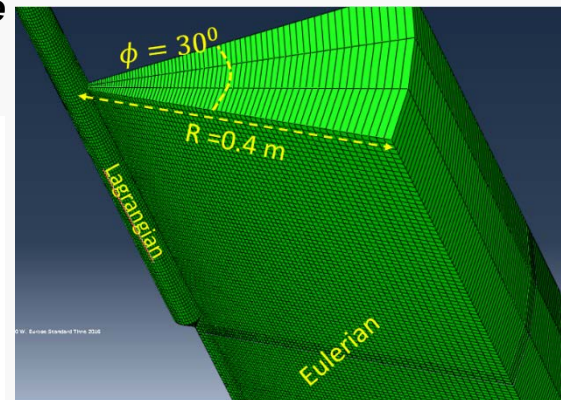
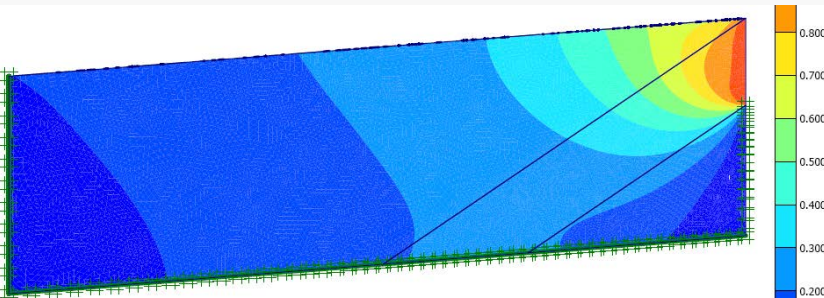
- Geotechnical laboratory testing
- Sulfate effects
- Strength and deformation analyses
- Testing equipment development

### *Large deformation (Coupled Eulerian-Lagrangian) FEA*

- Offshore pile installation (piles with large attachments)
- Penetration of CPT in sand at shallow depths
- Parallel computing for FEA simulations

### *Numerical modeling of blast-induced landslide*

- Stress wave propagation
- Accumulated strains



**UT Tyler Dynamic  
Cone Penetrometer**