

# The University of Texas at Tyler

## Criminal Justice Program

CRIJ 5340.060  
Violence and Society  
Spring 2025  
Online



Betty D. Charlson, MS  
Office: Virtual

Email: [BCharlson@uttyler.ed](mailto:BCharlson@uttyler.ed)

Office Hours: By virtual appointment since the course is online

### Course Description:

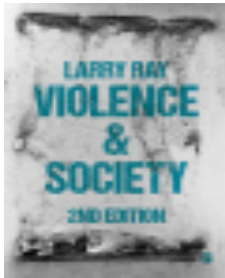
A review of the causes, treatment and impact of violent behavior, particularly serial/chronic violence in American society. Domestic violence is included in the review. Biological, psychological and sociological causes will be analyzed and compared. Responses by the Criminal Justice System, the public, the media, health care system, etc. will be analyzed. Impact on and treatment for victims, both adults and children will be included.

### Course Goal(s):

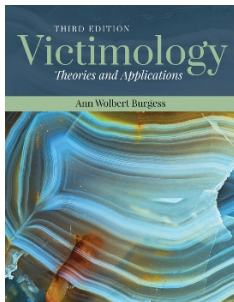
The goal of this course is to provide an overview of violence and crime in society from the criminal justice system perspective. Various violent crimes, their causes, victimization effects, prevention and treatment will be included. In addition to the overview of violent crime, students will also explore various complex topics of policy: prevention, treatment, society awareness, law enforcement, judicial response, etc.

## Required Books:

Ray, L. *Violence and Society* (2<sup>nd</sup> Edition). Los Angeles, California: Sage Publications. ISBN: 978-1-4739-0791-1

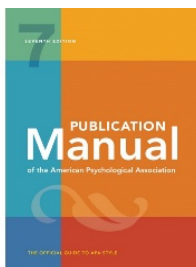


Burgess, A.W. *Victimology: Theories and Applications* (3<sup>rd</sup> Edition). Burlington, MA: Jones & Barnett Learning. ISBN: 978-1-2841-3019-5



## Recommended Book:

APA. (2019). *Publication manual of the American Psychological Association* (7<sup>th</sup> ed.). Washington, DC: American Psychological Association. ISBN: 978-1-4338-3217-8



## Internet Access:

It is imperative you have reliable internet access. If you do not have it at your residence, you will be required to spend time in the Computer Lab. This is important because I will

be making important announcements in the course Canvas site and sending you emails--- but most importantly because this is an online course. Also, I will post your grades in Canvas so you will have an “at a glance view” of your current standing in the course. Additionally, you will be required to upload assignments using Canvas.

## Course Requirements

It is essential students read the selected readings detailed in the Course Schedule section of the syllabus prior to the class session. This course is designed with a seminar format in mind, which will require active participation from everyone. Each student is responsible for all the readings and discussion material as they are an integral component for success on the examinations.

## Course Objectives: (At the end of the semester, you will be able to:)

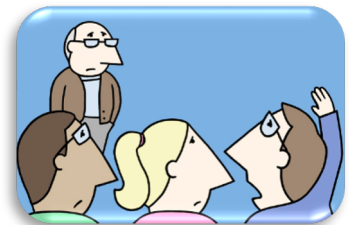
- Understand the complex and interacting causes of violent behavior from biological, psychological, and sociological perspectives in society.
- Explain the motivation systems behind violent behavior in society
- Identify and understand the major profiles of violent crime types and violent offenders with concentrations on serial murder and serial rape in society.
- Discuss the impact of violence on victims and their treatment(s).
- Identify and then design basic prevention techniques and strategies to address violence in society.
- Identify and explain the strategies of response to violent behavior for the criminal justice and health care professional in society.

## Attendance Policy:

This is an online course, and you are expected to complete all of the assignments. You should make every attempt to attend the session as it will complement the other activities in the course.

## Class Participation:

You are a graduate student, and you are expected to actively participate in this course. You will learn a lot from each other. To maximize the learning environment, it is imperative you read the weekly assignments.



## Missed Exams/Late Assignments:

Unfortunately, illnesses, deaths in the family, or other traumatic events are part of life. Such events are unwelcomed and because I understand how difficult these times are, if you contact me within 24 hours of the event **and** provide documentation, I will be happy to give you a make-up exam or extend an assignment deadline. However, you will not be able to get credit for any work you miss during your absence when it is an in-class exercise.

**The general rule is I will not accept any late assignments.** Please pay particular attention to the due dates for each assignment. All due dates are specified in the course schedule.

## Student Expectations:

You may be wondering what is expected of you? I have listed the minimum (basic) items that are in your best interests to adhere to because it will help you be successful in the course:

1. Remain current with the course material.
2. Read all the information in its entirety. A graduate student is expected to read and complete all work on time. The seminar format requires you be prepared for the class sessions and participate in the discussions.
3. Be an active participant in all classroom discussions and activities.
4. Attend all class sessions. This is very important because each session builds upon the previous session. In other words, your success in the course depends upon your engagement in all the learning activities.
5. Complete all assignments, projects, and assessments.
6. Submit all assignments on or before the due date.
7. If you need additional clarification, you should be contacting me as soon as practical. Do not wait until the end of the semester to ask for help. (Use the messaging function in Canvas to send me your concerns.)

## Instructor Expectations:

I believe teaching is a two-way street. Therefore, you should also have expectations of me. Here is what you can expect from me.

1. You should expect me to come to class prior to the start time and be prepared to engage you in the subject matter.
2. I will return all of your written work in a timely fashion. The written assignments take time to grade, but I will do my best to have them returned within one week.
3. I will also return any emails I receive from you within 48 hours.

## How to Contact Me:

I am very approachable. I am here to help you understand the importance of becoming knowledgeable about the major metropolitan problems public managers confront in today's society. Please ask questions in class and be engaged in the discussion. If you have any questions or concerns, please contact me at the earliest convenience possible.

Email me with any questions you may have through **my University email** account. My email is [BCharlson@uttyler.edu](mailto:BCharlson@uttyler.edu).

When sending an email, please write in the subject line **CRIJ 5340.060** (*then list the item that is the subject of the email*).

## Evaluation Procedures:

1. Discussion Boards & Activities: 20%

2. Oral Presentation of Research Paper	10%
3. Semester Research Paper	30%
4. Midterm Examination	20%
5. Final Examination	<u>20%</u>
	100%

## Discussion Boards/Activities (20%):

There will be weekly discussion questions and/or activities during the semester. Each discussion/activity will require you to think and apply the material you learned in your reading. You must also use evidence to support your position. This will require you to use the APA 7<sup>th</sup> Edition documentation style---to be clear, you must incorporate intext citations into all your postings and document your references appropriately).

Each of your initial discussion posts should be a minimum of 250 words. Your initial discussion post must be thorough and complete.

To obtain maximum points, you must include at least one reference to the weekly readings of each textbook or supplemental articles in your initial post. This should be paraphrased material with intext citations in the body of every post (APA format). Also, provide a reference at the conclusion of your posts! Your replies and responses to other posts should also contain evidence to support your position.

Your replies must be thorough, as well. This means they need to be more than a few sentences. As graduate students, a minimum of two responses to other students' discussion posts is required.

Take the discussion board and discussion activities serious, as this is where your application of the readings will be demonstrated. The grading will be critical as the goal is for you to think deeply on each discussion.

**All initial discussion postings/activities are due by 11:59 p.m each Thursday and the replies completed by 11:59 p.m on Sunday.**

**\*\*PLEASE NOTE\*\*** There are two Padlet discussion boards that will be assigned (not including the class introductions). You are expected to comment on at least two students' Padlet posts. There are two other discussion board activities that will not require responses to other students' posts. Those are the Week 2 oral discussion video and the Week 9 power point presentations. Week 2 and Week 9 discussion board activities will be due by 11:59 p.m. on Sunday. There will be no required Thursday postings for Week 2 and Week 9.

## Examinations (40%):

For this course there will be two examinations a midterm and a final examination. The midterm examination will test you on the material for the first half of the course. The final examination will NOT be comprehensive and will test your knowledge on the material starting after the midterm examination.

## Semester Research Project (40%):

There will be a paper that will encompass your work throughout the semester on a practical study that I have designed for you. The study will incorporate you using actual case involving a reported violent event in the United States. The paper will include an introduction, literature review, methods, analysis, and discussion sections.

The details for your paper are below:

1. You must use one-inch margins, Times New Roman with 12 pt. font.
2. Use APA formatting standards (title page, abstract, keywords, number your pages at the top right of each page, headings, reference page, etc.).
3. Complete the paper in Microsoft Word. **I will not accept any assignment via email.** It must be uploaded in Canvas (through Turnitin)!
4. A 8-10 full page minimum that utilizes at least eight (8) peer-reviewed references. (Note! Your title page and reference pages are not included in the minimum page requirement).
5. At the conclusion of your research project, **you will record a 10 minute** presentation about your project in Studio that will be linked into this Canvas Course. This will be 10% of the final project grade.

DO NOT PLAGIARIZE. If you have a question about how to properly cite a source, please see me.

## Missed Exams/Late Assignments:

There are No make-up examinations without written evidence from a medical professional or an extreme family situation.

**No late assignments will be accepted. No exceptions!**

## Grading Scale:

A=90% and above

B=80-89%

C=70-79%

D=60-69%

F=<60%

## Library Resource:

Check out the library resource page for assistance with this course and others you are taking within the Social Sciences Department. The resource page can be accessed through <http://libguides.uttyler.edu/sociology>.

## What is Plagiarism?

Plagiarism is simply using someone else's work and presenting it as your own. You must avoid this at all costs! Your credibility is on the line. Your work product must be your own. If you are borrowing someone else's facts, ideas or opinions without providing the individual proper credit you are stealing. In the academic world this is referred to as plagiarism and the penalty is severe. If the thought is not your own, you must cite your source to give proper credit. If you are borrowing someone else's words, you must enclose them in quotations as well as citing the source. Plagiarism also includes you borrowing, buying or stealing someone else's work product and presenting it as your own. DO NOT commit intellectual theft because you will compromise your academic future.



## Penalties for Plagiarism

Should a faculty member discover that a student has committed plagiarism; the student will receive a grade of 'F' in that course and the matter will be referred to Student Conduct for possible disciplinary action. The faculty member, however, has the right to give freshmen and sophomore students a “zero” for the assignment and to allow them to revise the assignment up to a grade of “F” (50%) if they believe that the student plagiarized out of ignorance or carelessness and not out of an attempt to deceive in order to earn an unmerited grade. This option is not available to juniors, seniors, or graduate students, who cannot reasonably claim ignorance of documentation rules as an excuse.

As for this class, I will simply just give you a final course grade of “F.” Fair enough? Let me know if you disagree by the end of the first week of the semester.

**Are You Still Unsure about Plagiarism? Here is how the University articulates it.**

## Statement Regarding Academic Dishonesty

**Academic dishonesty is a violation of University policy and professional standards. If compared to a violation of the criminal law, it would be classed as a felony. Academic dishonesty is defined as cheating, plagiarism, or otherwise obtaining grades under false pretenses. The penalty for academic dishonesty in this class will be no less than immediate failure of the course and a permanent student record of the reason therefore.**

**Many students have an inadequate understanding of plagiarism. Any idea or verbiage from another source must be documented. Anytime the exact words from another author are used they must be enclosed with quotation marks and followed by a citation. However, quotations should only be used on rare occasions. Student papers should be written in the student's own words; therefore, excessive quotations will result in a failing grade.**

Make-up Tests: The *University Catalog* does not establish make-ups as a student right. Major tests are forecasted; therefore, no make-up opportunities are contemplated. Opportunities to make-up missed examinations will be provided only for exceptional reasons and must be documented (e.g., hospital records, obituaries). Make-up examinations may be in forms

completely different from original examinations and will be scheduled at the convenience of the instructor.

## Penalties for Cheating

Should I discover you have cheated on any assessment, you will receive a “zero” for the assessment and not be allowed to make the assignment up. The incident will be reported to the chair of the department and (more importantly) to Student Conduct.

## Important Information:

Please refer to the course Canvas site on a frequent basis. You should be referring to the Canvas site prior to each class session because I may post an important announcement. Also, you must check your university email! **I do not tolerate the excuse, “I don’t check my patriots email or Canvas, so I never received the course announcement.”** Checking Canvas and your university email is your responsibility as a student.

## Handguns in the Classroom:

The University of Texas at Tyler respects the right and privacy of students who are duly licensed to carry concealed weapons in this class. License holders are expected to behave responsibly and keep a handgun secure and concealed. More information is available at <http://www.uttyler.edu/about/campus-carry/index.php>

## Tentative Course Schedule: (Week begins on Monday, ends on Sunday)

<u>Week</u>	<u>Reading Assignment</u>	<u>Assignment</u>	<u>Important Dates</u>
Week 1- January 13, 2025	Ch 3 Burgess Introduction Ray Ch 1 Ray	<b>Class Introductions</b> in Padlet Week 1 Discussion Questions	
Week 2- January 20, 2025	Ch 1 Burgess Ch 2 Ray	Week 2 Discussion Questions in Studio	1/12/25 MLK day
Week 3- January 27, 2025	Ch 3 Ray	<b>Research Project Topic</b>	1/27/25 Census Day
Week 4- February 3, 2025	Ch 2 Burgess Ch 4 Ray	Week 4 Discussion Questions	
Week 5- February 10, 2025	Ch 10 Burgess Ch 5 Ray	Week 5 Discussion Questions	
Week 6- February 17, 2025	Ch 9 Burgess Ch 6 Ray	<b>Midterm Examination</b> Week 6 Discussion Questions	2/17/25 Midterm Grade Rosters Open
Week 7- February 24, 2025	Ch 13 Burgess Ch 7 Ray	Week 7 Discussion Questions	
Week 8- March 3, 2025	Ch 14 Burgess Ch 8 Ray	<b>Research Paper Progress Check</b>	



		Week 8 Discussion Question in Padlet	
Week 9- March 10, 2025	Ch 8 Burgess Ch 9 Ray	Week 9 Discussion Questions Power Point Presentation	3/1/25 Final filing deadline for Spring 2023 graduation
Week 10- March 17, 2025	Spring Break	Spring Break	Spring Break
Week 11- March 24, 2025	Ch 10 Ray	Week 11 Discussion Questions	
Week 12- March 31, 2025	Ch 15 Burgess Ch 11 Ray	Week 12 Discussion Questions	3/31/25 Last day to withdraw from one or more 15-week courses
Week 13- April 7, 2025	Ch 5 Burgess	Week 13 Discussion Questions in Padlet	
Week 14- April 14, 2025	Ch 16 Burgess Ch 11 Ray Video Presentation	Week 14 Discussion Questions Video Presentation due in Studio	
Week 15- April 21, 2025	Submit Research Project	Research project due	
Week 16- April 28, 2025	Final Examination Week	Final Examination	5/6/25- Grades due

## UNIVERSITY POLICIES AND ADDITIONAL INFORMATION THAT MUST APPEAR IN EACH COURSE SYLLABUS

### UT Tyler Honor Code

Every member of the UT Tyler community joins together to embrace: Honor and integrity that will not allow me to lie, cheat, or steal, nor to accept the actions of those who do.

### Students Rights and Responsibilities

To know and understand the policies that affect your rights and responsibilities as a student at UT Tyler, please follow this link: <http://www.uttyler.edu/wellness/rightsresponsibilities.php>

### Campus Carry

We respect the right and privacy of students 21 and over who are duly licensed to carry concealed weapons in this class. License holders are expected to behave responsibly and keep a handgun secure and concealed. More information is available at <http://www.uttyler.edu/about/campus-carry/index.php>

### UT Tyler a Tobacco-Free University

All forms of tobacco will not be permitted on the UT Tyler main campus, branch campuses, and any property owned by UT Tyler. This applies to all members of the University community, including students, faculty, staff, University affiliates, contractors, and visitors. Forms of tobacco

not permitted include cigarettes, cigars, pipes, water pipes (hookah), bidis, kreteks, electronic cigarettes, smokeless tobacco, snuff, chewing tobacco, and all other tobacco products. There are several cessation programs available to students looking to quit smoking, including counseling, quit lines, and group support. For more information on cessation programs please visit [www.uttyler.edu/tobacco-free](http://www.uttyler.edu/tobacco-free).

### Grade Replacement/Forgiveness and Census Date Policies

Students repeating a course for grade forgiveness (grade replacement) must file a Grade Replacement Contract with the Enrollment Services Center (ADM 230) on or before the Census Date of the semester in which the course will be repeated. Grade Replacement Contracts are available in the Enrollment Services Center or at <http://www.uttyler.edu/registrar>. Each semester's Census Date can be found on the Contract itself, on the Academic Calendar, or in the information pamphlets published each semester by the Office of the Registrar.

Failure to file a Grade Replacement Contract will result in both the original and repeated grade being used to calculate your overall grade point average. Undergraduates are eligible to exercise grade replacement for only three course repeats during their career at UT Tyler; graduates are eligible for two grade replacements. Full policy details are printed on each Grade Replacement Contract.

The Census Date is the deadline for many forms and enrollment actions of which students need to be aware. These include:

- Submitting Grade Replacement Contracts, Transient Forms, requests to withhold directory information, approvals for taking courses as Audit, Pass/Fail or Credit/No Credit.
- Receiving 100% refunds for partial withdrawals. (There is no refund for these after the Census Date)
- Schedule adjustments (section changes, adding a new class, dropping without a "W" grade)
- Being reinstated or re-enrolled in classes after being dropped for non-payment
- Completing the process for tuition exemptions or waivers through Financial Aid

### State-Mandated Course Drop Policy

Texas law prohibits a student who began college for the first time in Fall 2007 or thereafter from dropping more than six courses during their entire undergraduate career. This includes courses dropped at another 2-year or 4-year Texas public college or university. For purposes of this rule, a dropped course is any course that is dropped after the census date (See Academic Calendar for the specific date).

Exceptions to the 6-drop rule may be found in the catalog. Petitions for exemptions must be submitted to the Enrollment Services Center and must be accompanied by documentation of the extenuating circumstance. Please contact the Enrollment Services Center if you have any questions.

### Disability/Accessibility Services

In accordance with Section 504 of the Rehabilitation Act, Americans with Disabilities Act (ADA) and the ADA Amendments Act (ADAAA) the University of Texas at Tyler offers

accommodations to students with learning, physical and/or psychological disabilities. If you have a disability, including a non-visible diagnosis such as a learning disorder, chronic illness, TBI, PTSD, ADHD, or you have a history of modifications or accommodations in a previous educational environment, you are encouraged to visit <https://hood.accessiblelearning.com/UTTyler> and fill out the New Student application. The Student Accessibility and Resources (SAR) office will contact you when your application has been submitted and an appointment with Cynthia Lowery, Assistant Director of Student Services/ADA Coordinator. For more information, including filling out an application for services, please visit the SAR webpage at <http://www.uttyler.edu/disabilityservices>, the SAR office located in the University Center, # 3150 or call 903.566.7079.

### Student Absence due to Religious Observance

Students who anticipate being absent from class due to a religious observance are requested to inform the instructor of such absences by the second class meeting of the semester.

### Student Absence for University-Sponsored Events and Activities

Revised 05/19 If you intend to be absent for a university-sponsored event or activity, you (or the event sponsor) must notify the instructor at least two weeks prior to the date of the planned absence. At that time the instructor will set a date and time when make-up assignments will be completed.

### Social Security and FERPA Statement

It is the policy of The University of Texas at Tyler to protect the confidential nature of social security numbers. The University has changed its computer programming so that all students have an identification number. The electronic transmission of grades (e.g., via e-mail) risks violation of the Family Educational Rights and Privacy Act; grades will not be transmitted electronically.

### Emergency Exits and Evacuation

Everyone is required to exit the building when a fire alarm goes off. Follow your instructor's directions regarding the appropriate exit. If you require assistance during an evacuation, inform your instructor in the first week of class. Do not re-enter the building unless given permission by University Police, Fire department, or Fire Prevention Services.

### Student Standards of Academic Conduct

Disciplinary proceedings may be initiated against any student who engages in scholastic dishonesty, including, but not limited to, cheating, plagiarism, collusion, the submission for credit of any work or materials that are attributable in whole or in part to another person, taking an examination for another person, any act designed to give unfair advantage to a student or the attempt to commit such acts.

- i. "Cheating" includes, but is not limited to:
  - copying from another student's test paper;
  - using, during a test, materials not authorized by the person giving the test;
  - failure to comply with instructions given by the person administering the test;
  - possession during a test of materials which are not authorized by the person giving the test, such as class notes or specifically designed "crib notes". The presence of

- textbooks constitutes a violation if they have been specifically prohibited by the person administering the test;
- using, buying, stealing, transporting, or soliciting in whole or part the contents of an unadministered test, test key, homework solution, or computer program;
  - collaborating with or seeking aid from another student during a test or other assignment without authority;
  - discussing the contents of an examination with another student who will take the examination;
  - divulging the contents of an examination, for the purpose of preserving questions for use by another, when the instructors has designated that the examination is not to be removed from the examination room or not to be returned or to be kept by the student;
  - substituting for another person, or permitting another person to substitute for oneself to take a course, a test, or any course-related assignment;
  - paying or offering money or other valuable thing to, or coercing another person to obtain an unadministered test, test key, homework solution, or computer program or information about an unadministered test, test key, home solution or computer program;
  - falsifying research data, laboratory reports, and/or other academic work offered for credit; • taking, keeping, misplacing, or damaging the property of The University of Texas at Tyler, or of another, if the student knows or reasonably should know that an unfair academic advantage would be gained by such conduct; and
  - misrepresenting facts, including providing false grades or resumes, for the purpose of obtaining an academic or financial benefit or injuring another student academically or financially.
- ii. “Plagiarism” includes, but is not limited to, the appropriation, buying, receiving as a gift, or obtaining by any means another’s work and the submission of it as one’s own academic work offered for credit.
- iii. iii. “Collusion” includes, but is not limited to, the unauthorized collaboration with another person in preparing academic assignments offered for credit or collaboration with another person to commit a violation of any section of the rules on scholastic dishonesty.
- iv. iv. All written work that is submitted will be subject to review by plagiarism software.

### UT Tyler Resources for Students

- UT Tyler Writing Center (903.565.5995), [writingcenter@uttyler.edu](mailto:writingcenter@uttyler.edu)
- UT Tyler Tutoring Center (903.565.5964), [tutoring@uttyler.edu](mailto:tutoring@uttyler.edu)
- The Mathematics Learning Center, RBN 4021, this is the open access computer lab for math students, with tutors on duty to assist students who are enrolled in early-career courses.
- UT Tyler Counseling Center (903.566.7254)

These policies are also available on the university website, please click the link <https://www.uttyler.edu/academicaffairs/files/syllabuspolicy.pdf> to confirm the policies are accurate as the university makes changes to the policies periodically. From experience, changes to these policies have occurred without faculty knowledge to ensure this syllabus is updated at

the same time as the university makes policy changes. Thus, please verify through the university website. <https://www.utt Tyler.edu/academicaffairs/files/syllabuspolicy.pdf>

**“I RESERVE THE RIGHT TO MODIFY THIS SYLLABUS AT ANY TIME. THEREFORE, YOUR ATTENTION TO THE ANNOUNCEMENTS IN CANVAS ARE CRUCIAL BECAUSE IT WILL ASSIST YOU REMAIN CURRENT ON THE MATERIAL AND KNOW WHEN THE SYLLABUS MAY BE MODIFIED.” – Instructor Betty Charlson.**