

# UNIVERSITY OF TEXAS AT TYLER

## SCHOOL OF PERFORMING ARTS

course syllabus for

### MUSI 1306.001: MUSIC APPRECIATION (3 CR HOURS) SPRING 2025 MWF 12:20-1:15 pm - FAC 1009



**INSTRUCTOR:** Mrs. Maria Ogburn  
**OFFICE:** FAC 2021  
**OFFICE PHONE:** (903) 566-7450  
**E-MAIL (preferred):** Please contact me at mogburn@uttyler.edu  
**OFFICE HOURS:** I am available MWF 11:15 am to noon or by appointment

**COURSE DESCRIPTION:** This course is designed to introduce you to the process of studying “classical” music which includes a brief overview of Western music from the Middle Ages to the Modern era focusing on musical forms, historical periods and composers. Emphasis is placed on listening to representative music selections. This course fulfills the university Core Curriculum requirement in Creative Arts for all majors.

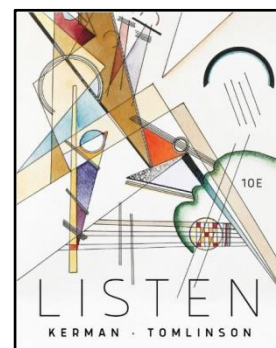
**COURSE OBJECTIVES:** The objective of *Music Appreciation* is for you as the student to examine the development of Western music from the earliest known sources until the present day. Students will be introduced to both sacred and secular music in all genres. The course places a strong emphasis on listening to and identifying various styles of music. Upon successful completion of the course, students will be able to:

- Apply basic music terminology to musical works relating to rhythm, melody, harmony, texture, and form through listening skills
- Recognize different instrumental families and the basic production of sound on these instruments
- Identify significant composers, works and styles for each period of Western music history
- Differentiate the various genres of music and their development through the major historical periods
- Demonstrate knowledge about a musical style by sharing it with the class in a group presentation
- Discuss music through your own musical influences/preferences at the beginning of the semester while relating your experience to the information learned at the end of the course

#### TEXTBOOK and OTHER REQUIRED MATERIALS:

*Listen*, 10th ed., by Joseph Kerman, Vivian Kerman, and Gary Tomlinson.  
New York: W.W. Norton, 2023. (with Total Access)

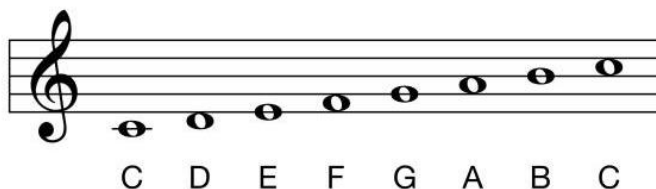
- **The textbook needs to include digital resources (Learning Tools)**
- The Ebook with Learning Tools can be also used without a physical book: ISBN 978-1-324-03944-0 and can be purchased here: <https://wwnorton.com/books/9781324039365>
- Students are NOT able to rent or purchase a used book as the Music Appreciation course needs to access online materials through a NEW physical book or a NEW eBook purchase.
- Reliable internet access and computer are very important in this course.



#### COURSE OUTLINE:

##### I. Fundamentals

1. Rhythm, Meter, and Tempo
2. Pitch, Dynamics, and Tone Color
3. Scales and Melody
4. Harmony, Texture, Tonality, and Mode
5. Musical Form and Musical Style



## II. Early Music: An Overview

6. The Middle Ages



## III. Early Music: An Overview

7. The Renaissance



## IV. The Eighteenth Century

8. The Early Baroque Period
9. PRELUDE The Late Baroque Period
10. Baroque Instrumental Music – Bach & Handel
11. Baroque Vocal Music



## V. The Eighteenth Century

12. PRELUDE Music and the Enlightenment
13. The Symphony and Concerto – Mozart & Haydn
14. Classical Theater and Chamber Music



## VI. The Nineteenth Century

15. Beethoven
16. PRELUDE Music After Beethoven: Romanticism
17. The Early Romantics
18. Romantic Opera – Verdi and Wagner
19. The Late Romantics

## VII. The Twentieth Century and Beyond

20. PRELUDE Music and Modernism
21. Early Modernism
22. Modernism Between the Wars
23. The Late Twentieth Century
24. Music in America: Jazz



## REQUIREMENTS FOR CREDIT:

**General Overview:** To be successful in this course, it is important to attend class on a regular basis. Concepts are cumulative and absences will make the course much more difficult to follow. The best way to absorb the material is to focus *on* the material so please refrain from texting, using your phone during class, or working on outside homework during class. If you have an emergency where you need to step out and use the phone, just let me know before or during class. Laptops or other electronic devices may be used during class to follow along with the slides and study material. I look forward to everyone learning to appreciate music by immersing yourselves *in* the music!

**Attendance Policy:** As a courtesy, please contact me via email *prior* to any absence. Some absences/tardies may be excused, so I will take into consideration every situation. Absences for religious holy days, active military service, and due to injury, illness, death, or major illness in a student's immediate family can be excused with documentation. School-sponsored activities are considered excused absences with email or written notification to me from your professors. Emergencies are handled on a case-by-case basis. If you arrive after class has begun, this will count as a tardy. Two tardies will count as one absence. If you arrive more than 15 minutes late, this will count as an absence. Attendance is 10% of your grade.

## Classroom Norms for a Good Learning Environment:

- Avoid talking when someone else is talking
- Put away cellphones during class
- Respect your fellow students
- Be prepared for class
- Participation in discussions
- Be on time for class (If you are late, please sit in the back)
- Wait to pack up your stuff until class is over

**Assignment Policy:** All assignments/exams are due on the days indicated. At the instructor's discretion, reduced credit will be given for work that is late or missing.

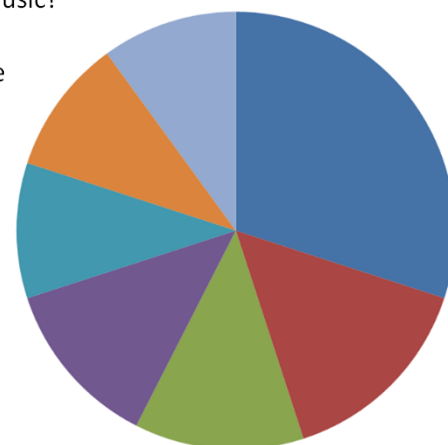
## Grading:

1. EVALUATION: The grade will be determined based on these criteria, with weights calculated as indicated:

Six Online Reading/Listening Exams	30%	■ Online Exams
Group Presentation Project	15%	■ Group Presentation Project
Norton Illumine eBook Reading & Questions	12.5%	■ eBook Assignments
InQuisitive & Other Assignments	12.5%	■ InQuisitive/Other Assignments
Two Classical Music Concert Reports	10%	■ Concert Reports
Short Essay & Video on "What is Music?"	10%	■ "What is Music?"
Attendance	10%	■ Attendance

2. GRADING SCALE

90%-100%	A
80%-89%	B
70%-79%	C
60%-69%	D
Below 60%	F



**PARTICIPATION:** Students are responsible for regularly checking their school email, logging into the course to read the online Illumine Ebook chapters and answer embedded questions, completing online Inquisitive/other assignments, exams, the group project, read announcements, and refer to the course schedule. During class, it is encouraged that students contribute to class discussions and ask questions. If something is confusing to you, it will probably help your classmates to ask about it.

**Academic Integrity:** Academic dishonesty is not allowed (cheating, copying work, plagiarism, etc.).

## METHODS FOR ASSESSING OUTCOMES:

Students will be evaluated through 6 Online Reading/Listening Exams Canvas using LockDown Browser. **Since these exams will be testing your knowledge, you are NOT allowed to have any books, notes, papers, etc. or any other electronic devices accessible during the exams.** Be sure to use a computer in a quiet space with a good internet connection for the online exams. Students will also be evaluated through various assignments including one short typed essay at the beginning of the semester and one short self-video on "What is Music?" at the end of the semester, weekly

*InQuisitive* online skill building assignments through the Total Access 10<sup>th</sup> Edition Textbook *Listen* designed to be entertaining and educational, embedded questions within the Illumine Ebook chapters to test your comprehension, online Canvas assignments, fun in-class group activities, and viewing two concerts and completing brief reports. Concert reports and writing assignments will be graded for grammar and format as well as content. Each student is encouraged to write their own *unique* observations. Points will be taken off for answers that are the same or very similar. The concert report template will be found on Canvas Modules under “Assignments” and there will be a list of approved concerts posted at UT Tyler that are free. If you want to attend a concert outside of the list, students can consult the instructor prior to the concert attendance for approval.

**METHODS OF INSTRUCTION:** A variety of instruction methods will be used, ranging from lecture-style teaching on the historical musical periods, hands-on fun activities, listening and aural evaluation, basic notation, texture, musical form and online Canvas lecture assignments. The class will be structured with in-person M/W/F classes.

**GROUP PRESENTATION PROJECT:** Students will create a free account on Google Slides. At the beginning of the semester, students will join or be assigned to a group with a musical jazz style. There are musical examples of the different jazz types in the assignment to get an idea of each style. A group will consist of approximately 3-6 students & each group of students will collaborate to create a “Slide Show” that consists of 10-13 slides that explain and illustrate the assigned topic for the class project. Students can contribute remotely to the slide presentation adding text, graphics, pictures, backgrounds, short videos, etc. Have fun with it! Each group will be assigned a date & have 20-23 minutes to present their slide show with full participation at the end of the semester for the class.

**TENTATIVE SCHEDULE OF ASSIGNMENTS:** This schedule is tentative, & updates may be made.

January 13	First day of class – Read Illumine Ebook Chp 1 & Answer Questions
January 15	Read Illumine Ebook Chp 2 & Answer Questions
January 17	Read Illumine Ebook Chp 3 & Answer Questions Online <i>InQuisitive</i> : How to Use InQuisitive Tutorial
January 20	<b>Martin Luther King Jr Holiday</b> First Short Writing Assignment “What is Music?” Due
January 22	Read Illumine Ebook Chp 4 & Answer Questions Online <i>InQuisitive</i> Chp 4 Skill Building Assignment Due
January 24	Read Illumine Ebook Chp 5 & Answer Questions
January 27	<b>Census Date: Last day for schedule changes / LockDown Browser Practice Quiz Due</b>
January 29	Read Illumine Ebook Chp 6 & Answer Questions Online <i>InQuisitive</i> Chp 6 Skill Building Assignment Due
January 31	<b>Middle Ages Review for Exam 1 over Chapter 6 (In-Class)</b> <b>Group Project:</b> Join a Group - Choose a Leader
February 1-4	<b><u>Online Exam 1 using LockDown Browser – Middle Ages (Reading &amp; Listening)</u></b>
February 5	Read Illumine Ebook Chp 7 & Answer Questions Online <i>InQuisitive</i> Chp 7 Skill Building Assignment Due
February 7	<b>Renaissance Review for Exam 2 over Chapter 7 (In-Class)</b> Renaissance Concept Map Activity in Class
February 8	Renaissance Review Chp 7 - Matching Due
February 8-11	<b><u>Online Exam 2 using LockDown Browser – Renaissance Period (Reading &amp; Listening)</u></b>

February 12	Read Illumine Ebook Chp 8 & Answer Questions Online <i>InQuisitive</i> Chp 8 Skill Building Assignment Due
February 14	Read Illumine Ebook Chp 9 & Answer Questions
February 17	Read Illumine Ebook Chp 10 & Answer Questions Online <i>InQuisitive</i> Chp 10 Skill Building Assignment Due
February 19	Read Illumine Ebook Chp 11 & Answer Questions Online <i>InQuisitive</i> Chp 11 Skill Building Assignment Due
February 21	<b>Baroque Review for Exam 3 over Chapters 8-11 (In-Class)</b>
February 22-25	<b><u>Online Exam 3 using LockDown Browser - Baroque Period (Reading &amp; Listening)</u></b>
February 26	Read Illumine Ebook Chp 12 & Answer Questions <b>Group Project:</b> Google Slide Format Due with Link to Slide Show
February 28	Read Illumine Ebook Chp 13 & Answer Questions Online <i>InQuisitive</i> Chp 13 Skill Building Assignment Due
March 3	First Concert Program & Brief Report Due
March 5	Read Illumine Ebook Chp 14 & Answer Questions Online <i>InQuisitive</i> Chp 14 Skill Building Assignment Due
March 7	<b>Classical Review for Exam 4 over Chapters 12-14 (In-Class)</b>
March 8-11	<b><u>Online Exam 4 using LockDown Browser – Classical Period (Reading &amp; Listening)</u></b>
March 10	<b>Midterm Grades Due</b>
March 12	Read Illumine Ebook Chp 15 & Answer Questions Online <i>InQuisitive</i> Chp 15 Skill Building Assignment Due
March 14	Read Illumine Ebook Chp 16 & Answer Questions Online <i>InQuisitive</i> Chp 16 Skill Building Assignment Due
March 17-21	<b>Spring Break</b>
March 24	<b>Group Project:</b> Preliminary PDF of Group Slide Presentation Due
March 26	Read Illumine Ebook Chp 17 & Answer Questions
March 28	<b>Romantic Part 1 Review for Exam 5 over Chapters 15-16 (In-Class)</b>
March 29 - April 1	<b><u>Online Exam 5 using LockDown Browser – Romantic Period – Part 1 (Reading/Listening)</u></b>
March 31	<b>Last day to withdraw from course</b>
April 2	Read Illumine Ebook Chp 18 & Answer Questions Online <i>InQuisitive</i> Chp 18 Skill Building Assignment Due
April 4	Read Illumine Ebook Chp 19 & Answer Questions Online <i>InQuisitive</i> Chp 19 Skill Building Assignment Due
April 7	Read Illumine Ebook Chp 20 & Answer Questions
April 9	Read Illumine Ebook Chp 21 & Answer Questions

April 11	In-Class Fun Group Activity Crossword Puzzle on Modernism for a Grade Read Illumine Ebook Chp 22 & Answer Questions
April 12	<b>Romantic Review for Exam 6 (Acrostic Puzzle) over Chapters 17-19 Due</b>
April 12-15	<b><u>Online Exam 6 using LockDown Browser – Romantic Period – Part 2 (Reading/Listening)</u></b>
April 13	<b>Second Concert Report ALTERNATIVE Assignment Due OR</b> (Second Concert Program & Brief Report if requested)
April 14	Read Illumine Ebook Chp 23 & Answer Questions
April 16	Online Canvas Matching Game Due Read Illumine Ebook Chp 24 & Answer Questions
April 18	<b>Group Project:</b> Final Group Presentation PDF Due 11:30 am <b>Group Jazz Slide Presentations</b>
April 20	Short Self-Video on “What is Music?” Due
April 21, 23, 25	<b>Group Slide Presentations</b>
April 28 - May 2	Finals Week – <b>There is <u>NO</u> Final</b> for this class

**UT Tyler Honor Code:** Every member of the UT Tyler community joins together to embrace: Honor and integrity that will not allow me to lie, cheat, or steal, nor to accept the actions of those who do.

## UT Tyler Values

**Servant Leadership:** We put the needs of our students, patients, colleagues, and community, first.

**Excellence:** We work collaboratively every day to be better and strive to establish and achieve exemplary outcomes.

**Accountability:** We hold ourselves to the highest ethical standards and manage the resources of UT Tyler wisely.

### The Use of Artificial Intelligence at UT Tyler:

UT Tyler is committed to exploring and using artificial intelligence (AI) tools as appropriate for the discipline and task undertaken. We encourage discussing AI tools’ ethical, societal, philosophical, and disciplinary implications. All uses of AI should be acknowledged as this aligns with our commitment to honor and integrity, as noted in UT Tyler’s Honor Code. Faculty and students must not use protected information, data, or copyrighted materials when using any AI tool. Additionally, users should be aware that AI tools rely on predictive models to generate content that may appear correct but is sometimes shown to be incomplete, inaccurate, taken without attribution from other sources, and/or biased. Consequently, an AI tool should not be considered a substitute for traditional approaches to research. You are ultimately responsible for the quality and content of the information you submit. Misusing AI tools that violate the guidelines specified for this course (see below) is considered a breach of academic integrity. The student will be subject to disciplinary actions as outlined in UT Tyler’s Academic Integrity Policy.

**AI is not permitted in this course at all:**

To best support your learning, you must complete all graded assignments by yourself to assist in your learning. This exclusion of other resources to help complete assignments includes artificial intelligence (AI). Refrain from using AI tools to generate any course content (e.g., text, video, audio, images, code, etc.) for an assignment or classroom assignment.

In Canvas, on the **"Syllabus"** page, please see additional links: **"Student Resources," "University Policies and Information"**