

THE UNIVERSITY OF TEXAS AT TYLER
School of Visual and Performing Arts
Music Program

KEYBOARD ASSESSMENT EXAM

Administered as final exam of Class Piano IV
Administered to transfer students as Piano Proficiency Exam

Musical examples are given only as samples of difficulty & will not be used in the exam.

1. Sight-read a 2-part excerpt from standard Classical repertoire. Only occasional glances at hands are allowed. Two attempts may be taken.

Mozart

A musical score for a two-part excerpt in 7/4 time. The top staff is in treble clef and the bottom staff is in bass clef. The key signature has one sharp (F#). The piece consists of seven measures. Fingerings are indicated by numbers 1-5 above or below notes. The melody in the treble clef starts with a quarter note G4 (finger 1), followed by a quarter note A4 (finger 4), a quarter note B4 (finger 1), and a quarter note C5 (finger 3). The bass line starts with a quarter note G3 (finger 4), followed by a quarter note F#3 (finger 4), a quarter note E3 (finger 1), and a quarter note D3 (finger 2). The piece concludes with a quarter note G3 (finger 1) in the bass and a whole note G4 (finger 1) in the treble.

2. Sight-read a 4-part excerpt from a hymn or chorale. Only occasional glances at hands are allowed. Two attempts may be taken.

A musical score for a four-part excerpt in G major and common time. The top staff is in treble clef and the bottom staff is in bass clef. The key signature has one sharp (F#). The piece consists of four measures. The melody in the treble clef starts with a quarter note G4, followed by a quarter note A4, a quarter note B4, and a quarter note C5. The bass line starts with a quarter note G3, followed by a quarter note F#3, a quarter note E3, and a quarter note D3. The piece concludes with a quarter note G4 in the treble and a whole note G3 in the bass.

3. Improvise a simple blocked-chord accompaniment for a lead-sheet melody. LH should play single bass note. RH should play 3-note triad. Be sure to start and end with scale step 1 in the soprano. Hold common tones and avoid parallel 5ths & 8ves. The melody does not have to be played and the accompaniment style may be more advanced. **Transpose to any key up to 5 sharps or flats.**

D G D A7 D Em A D

*Sample accompaniment style.
Other styles are possible and students may be more creative.*

D G D A7 D Em A7 D

4. From a 3-stave vocal/piano score, provide an accompaniment that includes the melody. At minimum, blocked chords may be used as in the lead sheet requirement, but maintain as much of the original accompaniment as possible. Reposition RH accompaniment chords as needed so that the melody is always the highest-sounding note. Students may practice the selection briefly before playing.

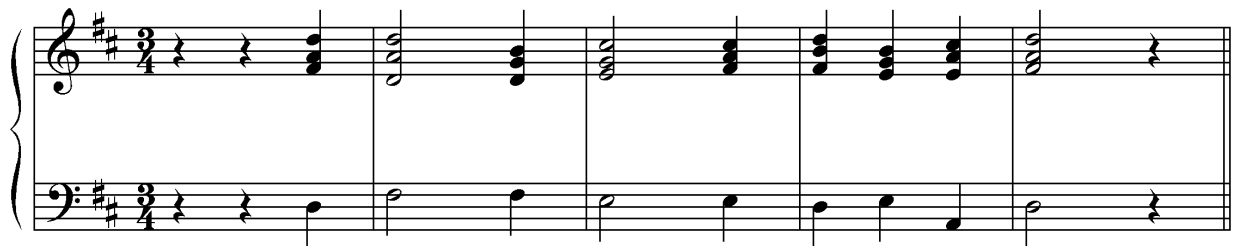
Piano

*Sample arrangement that includes the melody.
Other styles are possible and students may be more creative.*

5. Realize a simple figured bass line using 4-part keyboard harmony. Students should review Neapolitan 6th and augmented 6th chords in preparation for this portion of the exam. LH should play single bass note. RH should play 3-note triad. Be sure to resolve 7th chords correctly and hold common tones when possible. Also follow basic part-writing rules for doublings, and avoid parallel 5ths & 8ves. Students may practice the selection briefly before playing.



Sample realization of figured bass



6. Realize a harmonic progression using 4-part keyboard harmony in any possible key. Students should review Neapolitan 6th and augmented 6th chords in preparation for this portion of the exam. LH should play a single bass note. RH should play a 3-note triad. The number given in parenthesis above the first chord indicates the scale degree for the starting soprano note. Be sure to resolve 7th chords correctly and hold common tones when possible. Also follow basic part-writing rules for doublings, and avoid parallel 5ths & 8ves. Students may practice the progression briefly before playing.

(1)
 I ^{o7}/vi vi iii⁷ IV It6 I⁶₄ V I

*Sample realization of chord progression in C Major.
 Other keys may be required*

