

CHEM 1311.001: Introduction to Chemistry - Mr. Lewis

Syllabus
Summer
2023

University of Texas at Tyler

RBS 2024 from 8:00 AM - 8:55 AM MWF

Instructor Contact	Office	Drop By Hours	Email	Phone
Mr. Jerome Lewis	RBS 3013	M 10 am - 12:00 pm; T 1 pm - 2:30 pm; Th 11 am- 12:30 pm	jeromelewis@uttyler.edu	566-7206

Welcome to Introduction to Chemistry



Course Description

The study of chemistry can make a worthwhile contribution to the education of any student. Chemistry is a legitimate part of a cultural education, since it leads to better understanding of a diverse range of issues, ranging from environmental to health care to geopolitics of resources. Chemistry constantly provides us with a supply of new technologies for better living. The approach of this introductory chemistry course makes it suitable for non-science and non-engineering majors. Students in this course are responsible for all of the content and material included in and required by this course. The development of the subject presupposes a basic background in algebra at the college level. Good study habits will be essential to your success. You WILL have questions. If you do not ask the questions, I cannot answer them.

Table of Contents

Student Learning Outcomes	2
Required/Recommend Materials	2
Course Requirement	3
Study Tips/ Online Content	3
Homework/Midterms	4
Final Exams/ Grading Scale	5
Email/Attendance Policy	5
Classroom Courtesy Academic Integrity	6
Course Topics Student Resources	7

Important Dates

Class will meet in RBS 2024 Mon, Wed, and Fridays
August 21st - December 6th from 9:00 - 10:40 AM.

- Midterm Exams: **Sept 20th (Wed), Oct 13th (Fri), Nov 1st (Wed), and Nov 29th (Wed)**; dates set in stone
- Census date - last day to file for grade replacement: **Sept 1st**
- Labor Day (NO CLASS): **Sept 4th (Mon)**
- Last day to drop or withdraw from courses with a W: **Oct 30th**
- Thanksgiving Break (NO CLASS): **Nov 20-24th (Mon-Fri)**
- Final Exam from 8:00 am - 10:00 am in RBS 2024: **Dec 6th (Wed)**

MARK YOUR
CALENDAR!

Student Learning Outcomes

Throughout the semester you will be required to demonstrate a working knowledge of general chemistry using Critical Thinking skills (CT), and Empirical and Quantitative skills (EQs). By the end of the course, successful students should be able to:

1. Apply the scientific method to analyze items or problems and use original thinking and chemical knowledge to synthesize solutions (CT),
2. Manipulate and analyze data embedded in word problems found on homework, quizzes, and test (EQs),
3. Employ logic and critical thinking in order to solve a wide variety of problems,
4. Identify how chemistry topics are related and interconnected.

Additional Learning Outcomes

- 1) Define the different classes of matter, compounds, and chemical reactions
- 2) Solve for quantities based on chemical equations
- 3) Describe the electronic structure of atoms
- 4) Predict periodic trends of elements
- 5) Explain the bonding and geometry of simple molecules



Required Materials



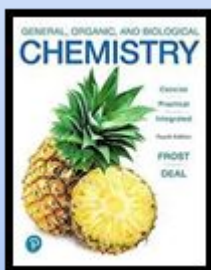
Scientific calculator capable of exponents and logarithms. *Get one you are comfortable / familiar with.*

You **CANNOT** use smart/graphing calculators on Midterm exams.

Periodic Table:
Access on Canvas. Digital or printed

Instructional Materials

You **MUST** have **Achieve Macmillan learning access to complete the online homework assignments.** You **MUST** have access to a computer with internet. Materials/Notes available on Canvas.



Recommended Materials

General, Organic, and Biological Chemistry:
An integrated approach by Frost and Deal

Textbook options:

- Hardcover ISBN: 9780134988696

Course Requirements

High school Algebra II are prerequisite for this course. High school chemistry is strongly recommended. If you have not had chemistry or it has been awhile, you should budget extra study time to avoid falling behind. Enrolling in the CHEM 1305 Toolkit page that reviews all the topics taught throughout the semester ([useful resource](#)).

- Intro to Chemistry Lab (CHEM 1105) is a separate course. If CHEM 1305 is a degree requirement for you then you must take both lecture and lab. Students taking CHEM 1305 to satisfy the CORE do NOT have to take the lab. However the lab does satisfy 1 hour of the STEM Core requirement
- Your lab instructor is not responsible for catching you up on lecture material you missed.
 - If you are unsure about dropping the lab then please speak with you laboratory instructor.

The course **meets every Mon, Wed, and Friday from August 1 to Dec 6** except as noted on page 8 of this syllabus.

To receive a passing grade for the course, you must take the comprehensive final exam; otherwise, you will fail the course regardless of your other exam and assignment scores

- **Final Exam: Day, Dec 6th from 8:00 am - 10:00 am**

The last day to withdraw from the course with a "W" is Monday, October 30. **IT is your responsibility to withdraw from the course.** If you are withdrawing from this course, you are encouraged, but not required to, withdraw from the laboratory course (CHEM 1112) and vice versa.

- If you drop the lecture, please let me know

Study Tips

Form Study Groups: By teaching others, you will learn the material quicker and get help in areas you are weak in.

*Ask people in lab to form a group

Don't "brain-dump" after chapter quizzes: You will continue to build upon and use information throughout the semester

Daily Quizzes: these will help you recall and apply what was taught in the previous lecture (take them seriously).

Study, Study, Study: At least 15-30 minutes a day; helps reinforce the material and identify weak areas

Attend Drop-By hours: You and a friend can come and ask questions about what you DO and DO NOT understand

Do not be afraid to get help!: Take advantage of [PASS tutoring](#), [Up-Swing's tutoring services](#), drop-by hours, help sessions, exam reviews, and/or tutors.



Upswing is a FREE 24/7 online tutoring service!

study

(verb)

The act of texting, eating and watching TV with an open textbook nearby.

Online Content

I will primarily communicate with you through Canvas. I will post

- Lecture notes: both the full notes (blank and inked) and practice problem only slides
- Lecture quizzes
- Dates for exams and review sessions as well as chapter quizzes due dates
- Links to toolkit tutorial videos for selected topics

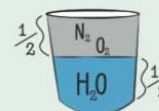


canvas

BY INSTRUCTURE

Please make sure you are set to receive notifications to your email and/or your phone/tablet/etc. from Canvas at least daily.

Technically,



it's always full

Chapter Quizzes (15% of Total Grade)

There will be one quiz (found on Canvas) per chapter covered. Each quiz will have approximately 15 questions. There will be one extra credit quiz, which covers all 10 chapters, at the end of the semester that can replace your lowest quiz grade. These quizzes are designed to review the big topics from each chapter and to help you learn the material. There will be concepts that are pulled from previous chapters, so DO NOT brain dump. The quizzes should not take you more than 30 to 45 minutes to complete.

The chapter quizzes are designed to help you learn the material.

Don't put off the quizzes until the due date. Make sure that you are working on them as we go through the chapter.

Chapter quizzes counts for 20% of the course. It can make or break your grade.

Homework (15% of Total Grade)

Will regularly be assigned for you to complete outside of the lecture class time. It is very important that you complete such homework assignments in a timely manner. All online homework problems accessed through the Achieve website, count as 15% of your total course grade. To access the online homework complete the following steps:

- Navigate to the Achieve Access Module on Canvas
- Click on Achieve Registration Instructions to connect your Canvas and Achieve accounts

Fall 2023 CHEM
1305 Section 001

CourseID: **ke4e4n**

Midterm Exams (40% of Total Grade)

Midterm Exam dates: Sept 20th (Wed), Oct 13th (Fri), Nov 1st (Wed), and Nov 29th (Wed) At least one week's notice will be given prior to the exam. The exams will be 26 multiple-choice and 4 short-answer (SA) questions. They cover material discussed in lecture, homework, daily quizzes, and chapter quizzes.

- Each MC question is worth 3.5 points for a total of 91 points and SA questions will total 14 points (**Total score: 105**). Your score will be taken out of 100 so it is possible to get over 100 on the midterm exams
- You are required to bring a pencil and non-programmable scientific calculator. One hand-written 3^{1/2}" x 5" note card, both sides is permitted (no photocopies or printed materials)
- I will provide scantrons and scratch paper for calculations.
- Midterm Exams start at 8:00 am and end at 8:55 am. When finished please turn in your exam, scantron, notecard, and scratch paper.
- I will do my best to return everything by the next two class days
- Test reviews will be in-person and over Zoom

Exam make-up days: Nov 13th (Mon) from 1:30 pm - 3:30 pm, Nov 14th (Tues) from 12:30 pm - 2:30 pm, or Nov 16th (Thur) from 10:30 am - 12:30 pm

- If you miss these days to makeup an exam then the final will replace the 0 for the missed exam
- Can schedule to makeup exam earlier, but will need to email me to arrange a day and time.

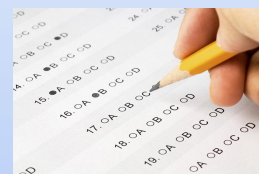
I do sometimes make mistakes (as does the scantron reader). If you find a mistake, please see me as quickly as possible - within 1 week - after the exam is returned; otherwise, that exam score will be considered final

There will be a practice quiz for each chapter posted on Canvas.

Make sure you are studying 15-30 minutes a day. The day/night before the exam is a bad time to start

Exam Review Dates

- Sept 19 (Tues) 4-6 pm
- Oct 12 (Tues) 4-6 pm
- Oct 31 (Tues) 3-5 pm
- Nov 28 (Tues) 4-6 pm



Cellphones, smart watches, and any similar electronic devices must be turned off and put away during exams. If they are observed out in a visually accessible place (i.e. between legs, on the floor, etc.), it will be assumed that they are being used to cheat; your exam will be taken away, you will receive a zero score (0 points) for the test, and you will be referred to the Office of Judicial Affairs.

Final Exam (15% of Total Grade)

The final examination will be given on (and only on) day, Dec 6, from 8:00 am to 10:00 am in RBS 2024. You are **REQUIRED** to take the final examination in order to receive a passing grade in the course. There will be no make-up of the final exam, no exceptions. This will be an in-person exam

Do not brain dump after each exam. The material builds on itself and gets used over and over again.

You must take the final exam to pass the class

- I will replace your lowest exam score with your final exam score if your final score is higher.
- For example, suppose you make the following grades 60, 80, 85, 85, and a 75 on the final. Your final grade will be calculated based on the scores 75, 80, 85, 85 (and 75 on the final) where the 60 was replaced with the 75. ONLY ONE score will be replaced.

Midterm Exam Grade Replacement

I will replace your lowest midterm exam score with your final exam score if your final exam score is higher. (If the final exam score is the lowest score, then no grades will be replaced.)

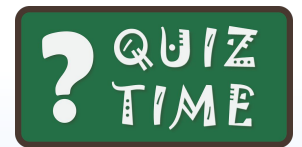
- Canvas does not have a good way to do this so this will be determined using a separate gradebook (Excel spreadsheet).
- If you have questions about this policy, please ask.

Daily Quizzes (15% of Total Grade)

There will be short quizzes over that day's lecture material - except on exam days. It will be due by 11:59 pm the day of that lecture and submitted on Canvas.

Ex: Assigned on Monday, due on Mon at 11:59 pm on Canvas

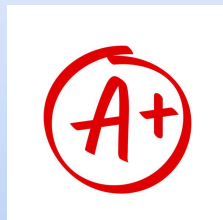
- You can use textbook, notes, and a calculator
- Some question may be more like survey questions
- These quizzes represent 10% of the overall course grade.
- Total of 15 and will drop 3 at the end of the semester



Grading Scale

Grades will tentatively be assigned on a 90/80/70/60 scale, but may be adjusted based upon my evaluation of the overall class performance. Attendance, class participation, and initiative will be considered for borderline grades. Grades will be posted on Canvas and weighted as follows:

Daily Quizzes	15%
Chapter Quizzes	15%
Achieve Homework	15%
Midterm Exams	40%
Final Exam	15%
Total	100%*



* The **OFFICIAL** grade book is on a separate grade book on my computer (in case of mistakes)

Email Policy (jeromelewis@uttyler.edu)

Contrary to popular thought, instructors do have lives outside. Saying that: I will try to respond to email regularly throughout normal business hours (8:30 am - 5:30 pm). After hours and weekends, I will respond as my life activities allow. Please do not expect responses to emails sent after 6:00 pm until the next day.

Attendance Policy

Experience has shown that course grades are directly proportional to lecture attendance. Therefore, attendance is expected. Class participation is a significant measure of performance. Not attending lecture may not only cause you to become behind in the understanding of the course but it may also negatively affect your grade. If you are unable to attend a class meeting, all discussed material and all assignments are your responsibility.

Classroom Courtesy

I expect students to behave with respect and courtesy to both the instructor and fellow students by:

- 1) Deactivating/silencing all phones, laptops, smart watches, and/or other electronic devices
- 2) Not texting or calling during class. If you absolutely must take a call, please leave class.
- 3) Use electronic devices responsibly. Make sure you are not distracting others
- 4) Not talking during class presentations or over top of another person during discussion. A quiet discussion about the material is fine (Make sure to whisper)
- 5) If you enter late or leave early make sure to do with minimal disruption. Sometime you cannot avoid late arrival or early exiting, but please do not make it a habit.
- 6) Do not be offended when I repeat your question so that others may hear what you are asking
- 7) If you have a question, respectfully interpret me. I sometimes do not see people's hands raised.

Do not distract others if you decide to use your electronic device

IF you have a question, respectfully interpret me.

In Case of illness

Students who are feeling ill or experiencing symptoms such as sneezing, coughing, digestive issues (e.g. nausea, diarrhea), or a higher than normal temperature should stay at home.

If you choose to attend class while sick a communicable disease please make an effort to distance yourself from others or wear a mask. **This is one case where sharing is not caring.**

Feeling Sick?



Stay Home!



Be proactive in taking care of yourself and your health by practicing good self-care .

Academic Integrity

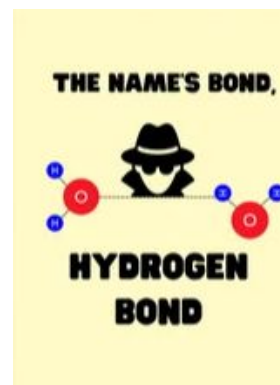
The value of any academic degree depends upon the integrity of the work done in earning that degree. Academic misconduct includes, but is not limited to cheating, plagiarism, collusion and/or falsification of records (including data collection). Students are expected to assume full responsibility for the content and integrity of all academic work submitted as homework, projects and examinations. University policy obliges instructors to report cases of academic misconduct to the Dean of Students; it also obligates students to report observed instances of academic dishonesty to the instructor. I expect a high level of responsibility and academic honesty from my students.



Honor and integrity that will not allow me to lie, cheat, or steal, nor accept the action of those who do.
- UT Tyler Honor Code

Course Topics

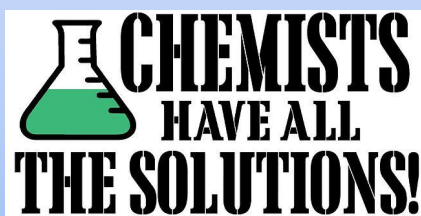
- Chapter 1 - Chemistry Basics - Matter and Measurements(*Week 1 - 2)
- Chapter 2 - Atoms and Radioactivity (*Week 2 - 3)
- Chapter 3 - Compounds - How Elements Combine (*Week 3 - 4)
- Chapter 4 - Introduction to Organic Compounds (*Week 4 - 6)
- Chapter 5 - Chemical Reactions (*Week 6 - 7)
- Chapter 6 - Carbohydrates - Life's Sweet Molecules (*Week 7 - 8)
- Chapter 7 - States of Matter and Their Attractive Forces (*Week 9)
- Chapter 8 - Solution Chemistry - Sugar and Water Do Mix (*Week 10)
- Chapter 9 - Acids, Bases, and Buffers in the Body (Week 11 - 12)
- Chapter 10 - Proteins - Workers of the Cell (*Week 12 - 13)



* Tentative schedule of what will be covered in class. There may be times when material begins and ends on a different day.

Student Resources

- Enrollment Services Center is where you add/change majors, add or drop classes or get financial aid help. (They are very busy during the first couple of weeks of the semester and around the “drop date” so please cut them some slack during those times.)
- [Student Counseling Center](#)
 - Dealing with stress/anxiety, improving studying skills, time management, etc. (all confidential)
- [UT Tyler Student Health and Wellness](#)
 - Substance abuse, household violence, good eating habits, etc.
- [Academic Success](#)
 - Student Learning Communities (SLC), PASS Tutoring Center, and Upswing 24/7 online tutoring
- [Mathematics Learning Center](#) (RBN 4021)
 - Open access computer lab with tutors on duty to assist students enrolled in early-career courses
- [The Writing Center](#)
 - They will help you learn how to ~~right rite~~ write ~~gooder~~ better.
- [Student Life](#)
 - Clubs, Greek System, recreational sports, service opportunities, etc.
- [Patriot Engage](#)
 - See what activities are being held and coming up on campus



Teaching Schedule - Fall Semester 2023

Below is a tentative schedule as a general guideline. Some material may begin and end on different day. However, test dates will not be changed.

Fall 2023					
Start of New Month		Holiday	Review Day	Test	Final
Week	Date	Day	Plan		Quiz
1	August 21	Monday	Intro to Class - Syllabus	1.1	1
	23	Wednesday	Begin Ch. 1	1.1, 1.2	2
	25	Friday	Continue Ch. 1	1.2, 1.3	3
2	28	Monday	Continue Ch. 1	1.3, 1.4	4
	30	Wednesday	End Ch. 1/ Begin Ch. 2	1.5, 1.6, 2.1	5
	September 1	Friday	Continue Ch. 2	2.2, 2.3, 2.4	6
3	4	Monday	No Class - Labor Day	NO CLASS	XXX
	6	Wednesday	End Ch. 2	2.5, 2.6, 2.7	7
	8	Friday	Begin Ch. 3	2.7, 3.1, 3.2	8
4	11	Monday	Continue Ch. 3	3.3, 3.4	9
	13	Wednesday	Continue Ch. 3	3.5, 3.6	10
	15	Friday	End Ch. 3/ Begin Ch. 4	3.6, 3.7, 4.1	11
5	18	Monday	Review Test 1	Ch. 1, 2, 3	12
	20	Wednesday	Test 1	Ch. 1, 2, 3	XXX
	22	Friday	Begin/Continue Ch. 4	4.1, 4.2, 4.3	13
6	25	Monday	Continue Ch. 4	4.3, 4.4	14
	27	Wednesday	End Ch. 4	4.4, 4.5	15
	29	Friday	Begin Ch. 5	5.1, 5.2, 5.3	16
7	October 2	Monday	End Ch. 5	5.4, 5.5, 5.6	17
	4	Wednesday	Begin Ch. 6	6.1, 6.2	18
	6	Friday	Continue Ch. 6	6.3, 6.4	19
8	9	Monday	End Ch. 6	6.5, 6.6, 6.7	20
	11	Wednesday	Review Test 2	Ch. 4, 5, 6	21
	13	Friday	Test 2	Ch. 4, 5, 6	XXX
9	16	Monday	Begin Ch. 7	7.1, 7.2	22
	18	Wednesday	Continue Ch. 7	7.3, 7.4	23
	20	Friday	End Ch. 7	7.5, 7.6	24
10	23	Monday	Begin Ch. 8	8.1, 8.2	25
	25	Wednesday	Continue Ch. 8	8.3, 8.4	26
	27	Friday	End Ch. 8	8.5, 8.6, 8.7	27
11	30	Monday	Review Test 3	Ch. 7, 8	28
	November 1	Wednesday	Test 3	Ch. 7, 8	XXX
	3	Friday	Begin Ch. 9	9.1, 9.2, 9.3	29
12	6	Monday	Continue Ch. 9	9.3, 9.4, 9.5, 9.6	30
	8	Wednesday	End Ch. 9	9.6, 9.7, 9.8	31
	10	Friday	Begin Ch. 10	10.1, 10.2	32
13	13	Monday	Continue Ch. 10	10.2, 10.3, 10.4	33
	15	Wednesday	Continue Ch. 10	10.5, 10.6	34
	17	Friday	End Ch. 10	10.6, 10.7	35
14	20	Monday	Thanksgiving Break	NO CLASS	XXX
	22	Wednesday	Thanksgiving Break	NO CLASS	XXX
	24	Friday	Thanksgiving Break	NO CLASS	XXX
15	27	Monday	Review Test 4	Ch. 9, 10	36
	29	Wednesday	Test 4	Ch. 9, 10	XXX
	Dec 1	Friday	Review Final Exam	All Chapters	37
16	4	Monday	Optional Review Day	All Chapters	XXX
	6	Wednesday	Final Exam: 8-10 am	All Chapters	XXX