



**Pathophysiology of Acute Care
NURS 3303
Summer 2024**

**Scheduled Class Days and Times: This is an online course.
The lectures are pre-recorded. See the calendar for due dates.**

3303.560

Tyler Instructor: Janice Miles PhD, RN, NI-BC

Office: meet online via Zoom (see Instructor section in Canvas for link)

Phone: 903.566.7320 (no office phone)

***Email:** jmiles@uttyler.edu or through *Canvas messaging

Office Hours: TBD

***Best way to contact me**

3303.561

Tyler Instructor: Courtney Day MSN, RN

Office: meet online via Zoom (see Instructor section in Canvas for link)

Phone: 903.566.7320 (no office phone)

***Email:** cday@uttyler.edu or through *Canvas messaging

Office Hours: TBD

***Best way to contact me**

Course Description: This course focuses on the etiology, pathophysiology, and clinical presentation of selected human diseases across the life span.

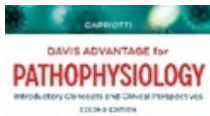
Prerequisites: School of Nursing Advisor Approval

Student Learning Outcomes:

Upon successful completion of this course, the student will be able to:

1. Integrate knowledge from the biological sciences into the study of the pathophysiology of human diseases.
2. Compare the pathologic origins of selected disease processes at the cellular and systemic levels.
3. Correlate the effects of internal and external environmental risk factors with disease development and progression.
4. Discuss the influence of genetic, ethnic, and cultural factors on health promotion and disease prevention, progression, and treatment.
5. Explain the effects of compensatory body mechanisms in response to major alterations in physiology.
6. Relate diagnostic test findings to both objective and subjective disease symptoms.
7. Employ select nursing and biomedical research studies in the application of pathophysiologic principles to nursing practice.
8. Discuss the impact of the current body of knowledge in pathophysiology on evidence-based nursing practice.

Required Textbooks and Readings:



Capriotti, T. & Frizzell, J. P. (2020). *Pathophysiology: Introductory concepts and clinical perspectives* (2nd edition). Philadelphia, PA: F.A Davis Company.



Students are **required to have the textbook or E-book version of the text the first week of class**. The textbook and the E-book version include **access to Davis Advantage**. Davis Advantage includes web-based activities to enhance learning. Completion of Davis Advantage activities counts toward the course grade.

BOTH the text and access to Davis Advantage are REQUIRED for the course. Rental books do **not** come with access to the required Davis Advantage.

For the UT Tyler bookstore to list both options (printed and e-book) they both show as required. You only need to purchase one, whichever you prefer. The verbiage on the website can be confusing, look at the “ISBN” number under the description and match it to the explanation below to decide which one you want to purchase.

- ISBN: 9781719640091 (e-book and Davis Advantage)
- ISBN: 9780803694118 (hardcover printed book and Davis Advantage)

Students can also choose to purchase textbook (printed or e-book) with Davis Advantage directly from FA Davis www.fadavis.com --Use promo code **8D57E7XY** for discount.

Special Course Notes: This course requires you to use Davis Advantage, as noted in the “Required Textbook and Readings” Section above.

1. Proctoring Notice: Each of the five major exams are administered using the live proctoring service through ProctorU. The student is responsible for signing up for a proctored exam time through ProctorU within the exam time window provided. This service is provided to the student free of charge, however, ProctorU charges additional fees when signing up for an exam time less than 72 hours prior to the exam. The student is responsible for any additional fees incurred due to waiting to 72 hours or less before the exam time to schedule.

Assignments and Weights/Percentage/Point Values

- | | |
|-------------------------------|-----|
| 1. 5 Exams (17% each) | 85% |
| 2. Canvas Quizzes | 10% |
| 3. Davis Advantage Activities | 5% |

Grading Scale: Specific guidelines and grading criteria for all assignments are in the Modules. Final grades for the course will be determined based upon the following point assignments (for NURS 3303-Pathophysiology):

- A - 90-100
- B - 80-89
- C - 70-79
- D - 60-69
- F - Below 60

Final course grades less than 70 are not rounded up.

The simple average of all exam grades must first be at or above 70% in order to pass the course. Once the student has achieved a simple exam average of 70% or higher, course grades will be determined based on the weighted calculation of exams and other required course work.

Grade Appeals: Although the university policy allows 60 days for grade appeals, the School of Nursing follows a stricter timeline of 10 days to facilitate students' timely progression through the curriculum. In the case of extenuating circumstances, please consult the Associate Dean of Academic Affairs for guidance.

Academic Integrity: Cheating of any kind, as defined in Section 8 of the UT Tyler Manual of Policies and Procedures (MOPP) for Student Affairs (<https://www.uttyler.edu/mopp/>), will not be tolerated.

Consequences may include:

- reprimand
- exam failure
- course failure
- expulsion from the Nursing program
- expulsion from the University
- other consequences as assigned

Exam and homework materials, questions, and problems are the intellectual property of faculty, UT Tyler, or publishers.

- These materials may not be distributed without permission.

- Distributing or uploading them to online resources destroys the integrity of the assignment and the course, allowing others an unfair advantage by letting them view the materials.
- Uploading these materials to online resources is a violation of UT Tyler's academic misconduct policies and may result in formal conduct charges.
- Sanctions for uploading or otherwise divulging the contents of these materials can include:
 - a reduced or failing grade on an assignment
 - a reduced or failing grade for the course
 - removal from the Nursing program
 - removal from UT Tyler

Late Policy: 5% will be deducted each day an assignment is past due unless prior arrangements have been made with your course faculty. Extenuating circumstances may apply.

Repeating a Course: Students repeating this course may not use previously submitted assignments nor utilize the same patients for an assignment. Submitting the same or slightly modified assignments from previous semesters is considered self-plagiarism and is subject to academic discipline, including failing the assignment or the course.

Attendance and Make-up Policy: Attendance/participation is expected. Make-up for exams, quizzes, assignments, and missed clinical time is at the instructor's discretion.

Grade Replacement: Students repeating a course for grade forgiveness (grade replacement) must file a Grade Replacement Contract with the Enrollment Services Center (ADM 230) on or before the Census Date of the semester in which the course will be repeated. Grade Replacement Contracts are available in the Enrollment Services Center or at <http://www.uttyler.edu/registrar>. Each semester's Census Date can be found on the Contract itself, on the Academic Calendar, or in the information pamphlets published each semester by the Office of the Registrar.

Failure to file a Grade Replacement Contract will result in both the original and repeated grade being used to calculate your overall grade point average. Undergraduates are eligible to exercise grade replacement for only three course repeats during their career at UT Tyler; graduates are eligible for two grade replacements. Full policy details are printed on each Grade Replacement Contract.

Graded Course Requirements Information:

Exams: A total of 5 exams will be given on campus as indicated on the Course Calendar. Each exam will be worth 100 points. Failure to take an exam as scheduled will result in a grade of 0 for the exam. In the event of illness or emergency, the student should contact faculty. Make-up for a missed exam is at the instructor's discretion.

Quizzes: Online quizzes are taken in Canvas as indicated on the Course Calendar. Each quiz will be worth 100 points. Quizzes will open and close as noted on the Course Calendar. Failure to complete the quiz within this time frame will result in a grade of 0 for the quiz. It is recommended that the student take the quizzes on campus or on a laptop to avoid technical difficulties. The UTT IT department recommends using Firefox or Chrome browsers for Canvas. Class notes and textbooks may be used for the weekly online quizzes. Quiz grades will be calculated into the course final grade only after a simple average of 70% is attained on exams.

Davis Advantage Interactive Assignments: Weekly interactive learning activities are assigned for each module. The activities are accessed through Canvas assignments. See the Course Calendar for assignment due dates. The interactive activity grade is calculated as the percent of activity completion. Interactive activity assignment grades will be calculated into the course final grade only after a simple average of 70% is attained on exams.

Important Course Dates-Summer 2024:

- Summer Classes begin Mon., 5/13/24
- Memorial Day Holiday: Mon., 5/27/24
- Census Date (withdraw without penalty): Tues., 5/28/24
- Emancipation Holiday: Wed., 6/19/24
- Independence Holiday: Thurs., 7/4/24
- Last Date to Withdraw: Tues., 7/16 (Please contact your advisor to discuss withdrawing from the course and notify your course instructor.)
- School of Nursing Final Exams Week: 8/12-16, 2024

Calendar of Topics, Readings, and Due Dates:

Students will sign up for a time slot to take the exams by the due date through the proctoring service ProctorU. Schedule more than 72 hours in advance to avoid ProctorU additional fees.

Week # & Class dates	Topics & Textbook Chapters (Selected pages only--See Canvas for assigned reading)	Davis Advantage Modules (Due by 2359 the Sunday before exam)	Quizzes (Due by 2359 the Sunday before exam)
Week 1 5/14 & 16	Course Orientation 2-Cellular Injury, Adaptations, & Maladaptive Changes 7-Fluid & Electrolyte Imbalances 9-Inflammation and Dysfunctional Wound Healing	Chapters 2, 7 (x2), 9 (4 activities)	Getting Started items: - Student Forms Quiz -Syllabus Quiz Due Sun., 5/19 @ 2359
Week 2 5/21 & 23	8-Acid-Base Imbalances 10-Infectious Diseases 28-Sexually Transmitted Infections	Chapters 8, 10 (2 activities) Wks 1-2 due Sun., 5/26-2359	Quizzes 1 & 2 due by Sun., 5/26 @ 2359
Week 3 5/28 & 30	Exam 1 (Wks 1 & 2 topics): Tues., 5/28 (due to Mon holiday) 12-Disorders of White Blood Cells 13-Disorders of Red Blood Cells 14-Disorders of Platelets, Hemostasis, & Coagulation	Chapters 12, 13, 14 (3 activities)	
Week 4 6/4 & 6	11-Disorders of the Immune System 40-Cancer	Chapters 11 (x2), 40 (3 activities)	
Week 5 6/11 & 13	22-Renal Disorders 23-Urological Disorders	Chapters 22 (x2), 23 (3 activities) Wks 3-5 due Sun., 6/16-2359	Quizzes 3 & 4 due by Sun., 6/16 @2359
Week 6 6/18 & 20	Exam 2 (Wks 3, 4, & 5 topics): Mon., 6/17 15-Arterial Disorders 16-Ischemic Heart Disease & Conduction Disorders 19-Disorders of the Venous System	Chapters 15 (x2), 16 (x2) (4 activities)	
Week 7 6/25 & 27	17-Heart Failure 18-Valvular Heart Disease 46-Shock (Pages 1151-1159 only)	Chapters 17 (x2), 18, 46 (4 activities)	
Week 8 7/2 only (7/4-Holiday)	20-Respiratory Inflammation and Infection 21-Restrictive and Obstructive Pulmonary Disorders	Chapters 20, 21 (x2) (3 activities) Wks 6-8 due Sun., 7/7-2359	Quizzes 5 & 6 due by Sun., 7/7 @ 2359
Week 9 7/9 & 11	Exam 3 (Wks 6, 7, & 8 topics): Mon., 7/9 33-Cerebrovascular Disorders 34-Chronic & Degenerative Neurological Disorders	Chapters 33, 34 (2 activities)	
Week 10 7/16 & 18	35-Brain & Spinal Cord Injury 6-Pain	Chapters 35, 6 (2 activities)	

Week 11 7/23 & 25	37-Musculoskeletal Trauma 38-Degenerative Disorders of Musculoskeletal System 39-Infection & Inflammatory Disorders of the Musculoskeletal System	Chapters 37, 38, 39 (3 activities) Wks 9-11 by Sun., 7/28-2359	Quizzes 7 & 8 due by Sun., 7/28 @ 2359
Week 12 7/30 & 8/1	Exam 4 (Wks 9, 10, 11 topics): Mon., 7/29 24-Endocrine Disorders 25-Diabetes Mellitus & the Metabolic Syndrome	Chapters 24 (x3), 25 (x3) (6 activities)	
Week 13 8/6 & 8	29-Disorders of Esophagus, Stomach, & Small Intestine 30-Common Disorders of the Large Intestine 31-Infection, Inflammation, and Cirrhosis of the Liver 32-Gallbladder, Pancreatic, and Bile Duct Dysfunction	Chapter 29, 30, 31, 32 (4 activities) Wks 12-13 by Sun., 8/11-2359	Quizzes 9 & 10 due by Sun., 8/11 @ 2359
Week 14 8/13	Exam 5 (Wks 12 & 13 topics): Mon., 8/14		

School of Nursing Policies and Additional Information can be found at the website below.

https://www.utt Tyler.edu/nursing/college/student_guide_and_policies.php

Student Resources and University Policies and Information are provided in Canvas.

Technical resources: Laptops/electronic devices are required for testing with ATI. Notebooks and tablets are not compatible for ATI Products.

Artificial Intelligence in course work: Refer to the UT Website for more details @ utt Tyler.edu - digital learning AI.